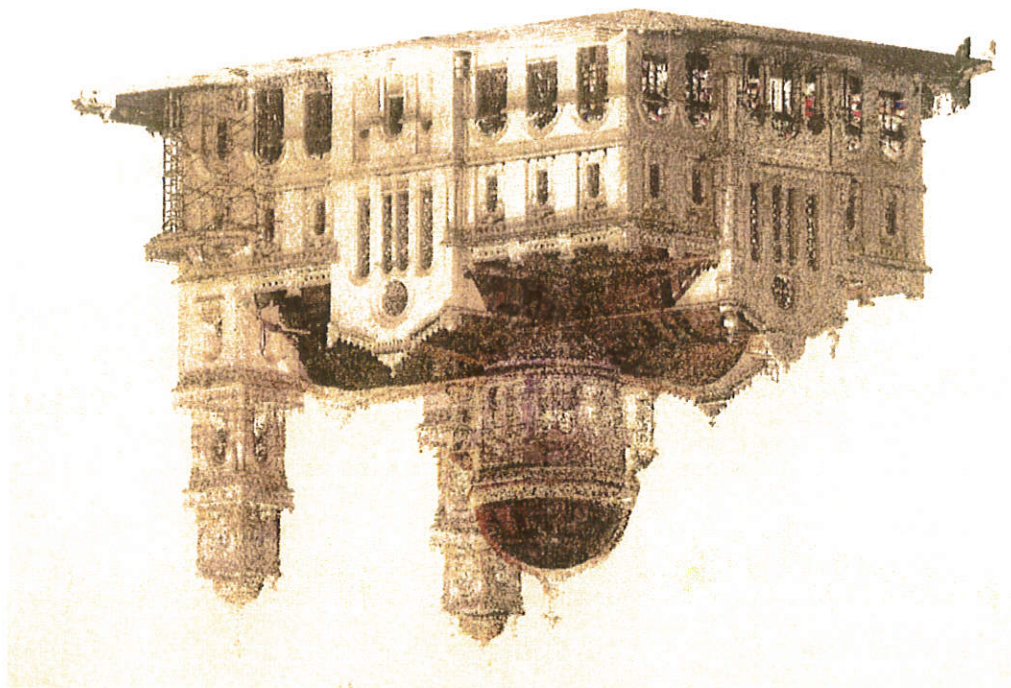


Ημερομηνία: 15.12.2020

Μυλωνάς (ΑΜ)

Ομάδα εργασίας: Μ. Σκαμναντζάρη (ΑΤΜ), Ε. Ιωαννίδου (ΑΜ), Ο. Δ. Κουντουρόπουλου (ΑΜ), Α. Θέμα: Γεωμετρική τεκμηρίωση, παραγωγή ορθοφωτογραφιών και διεξαγωγή σαρώσεων

Τεχνική έκθεση στο πλαίσιο του ερευνητικού έργου «Ερευνητικές εργασίες και διερεύνηση βέλτιστων λύσεων αποκατάστασης-ενίσχυσης φέροντος οργανισμού Ιερού Ναού Αγίου Μηνά Ηρακλείου Κρήτης»



ΤΕΧΝΙΚΗ ΕΚΘΕΣΗ

ΕΘΝΙΚΟ ΜΕΤΣΟΒΙΟ ΠΟΛΥΤΕΧΝΕΙΟ
ΣΧΟΛΗ ΠΟΛΙΤΙΚΩΝ ΜΗΧΑΝΙΚΩΝ

ΕΡΕΥΝΗΤΙΚΕΣ ΕΡΓΑΣΙΕΣ ΚΑΙ ΔΙΕΡΕΥΝΗΣΗ ΒΕΛΤΙΣΤΩΝ ΑΣΕΩΝ ΑΠΟΚΑΤΑΣΤΑΣΗΣ-ΕΝΙΣΧΥΣΗΣ
ΦΕΡΟΝΤΟΣ ΟΡΓΑΝΙΣΜΟΥ ΙΕΡΟΥ ΝΑΟΥ ΑΓΙΟΥ ΜΗΝΑ ΗΡΑΚΛΕΙΟΥ ΚΡΗΤΗΣ

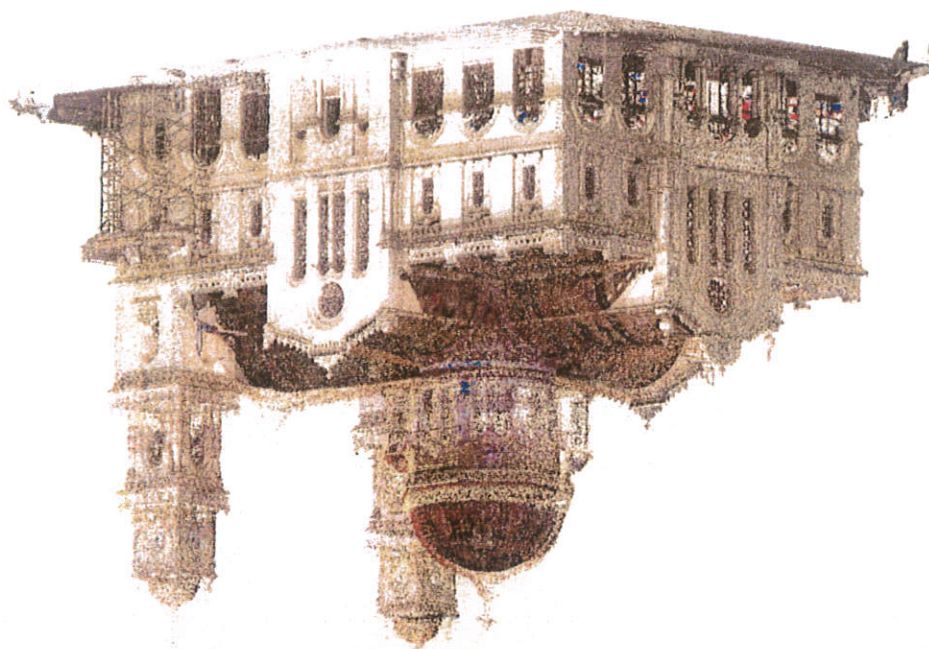


Ημερομηνία: 15.12.2020

Μυλωνάς (ΑΜ)

Θέμα: Έρευνες: Μ. Σκαμαντζάρη (ΑΤΜ), Ε. Ιωαννίδου (ΑΜ), Ο. Δ. Κουντουρόπουλου (ΑΜ), Α. Θέμα: Γεωμετρική τεκμηρίωση, παραγωγή ορθοφωτογραφιών και διεξαγωγή σαρώσεων

Τεχνική έκθεση στο πλαίσιο του ερευνητικού έργου «Ερευνητικές εργασίες και διερεύνηση βέλτιστων λύσεων αποκατάστασης-ενίσχυσης φέροντος οργανισμού Ιερού Ναού Αγίου Μηνά Ηρακλείου Κρήτης»



ΤΕΧΝΙΚΗ ΕΚΘΕΣΗ

ΕΘΝΙΚΟ ΜΕΤΣΟΒΙΟ ΠΟΛΥΤΕΧΝΕΙΟ
ΣΧΟΛΗ ΠΟΛΙΤΙΚΩΝ ΜΗΧΑΝΙΚΩΝ

ΕΡΕΥΝΗΤΙΚΕΣ ΕΡΓΑΣΙΕΣ ΚΑΙ ΔΙΕΡΕΥΝΗΣΗ ΒΕΛΤΙΣΤΩΝ ΑΥΞΕΩΝ ΑΠΟΚΑΤΑΣΤΑΣΗΣ-ΕΝΙΣΧΥΣΗΣ
ΦΕΡΟΝΤΟΣ ΟΡΓΑΝΙΣΜΟΥ ΙΕΡΟΥ ΝΑΟΥ ΑΓΙΟΥ ΜΗΝΑ ΗΡΑΚΛΕΙΟΥ ΚΡΗΤΗΣ



Εισαγωγή



Σκοπός της παρούσας Τεχνικής Έκθεσης είναι να περιγράψει τις βασικές επιλογές και αποφάσεις που ελήφθησαν με στόχο την αρτιότερη ολοκλήρωση του σχετικού ερευνητικού έργου και την παραγωγή των απαραίτητων παραδοτέων σύμφωνα με τις προδιαγραφές του ερευνητικού έργου.

2. Εργασίες Σύνταξης Δεδομένων

Το χρονικό διάστημα 4-10 Ιουνίου 2020 πραγματοποιήθηκαν οι εργασίες σύνταξης των απαραίτητων δεδομένων υπαίθρου με στόχο την πλήρη και λεπτομερή γεωμετρική τεκμηρίωση του Ιερού Ναού Αγίου Μηνά στο Ηράκλειο Κρήτης. Ο εξοπλισμός που χρησιμοποιήθηκε περιελάμβανε:

- Ολοκληρωμένο γεωδαιτικό σταθμό PENTAX R-323NX, με δυνατότητα μέτρησης γωνιών με 3'' και αποστάσεων με 3mm+2ppm (με κατάφωτο) και 5mm+2ppm (Χωρίς κατάφωτο).
- Ψηφιακή μηχανή υψηλής ανάλυσης SONY A7RIII, με φάκο 28-75mm. Το μέγεθος του pixel αυτής της μηχανής είναι 4.5µm.

- UAS Mavic 2 Pro

- Επίγειος σαρωτής Laser Leica BLK360

Οι εργασίες που πραγματοποιήθηκαν περιελάμβαναν επιγραμματικά τα εξής:

- Ίδρυση πολυγωνομετρικού δικτύου που καθόριζε όλα τα προς τεκμηρίωση πεδία και το οποίο χρησιμοποιήθηκε για τον προσδιορισμό των συντεταγμένων όλων των σημείων που μετρήθηκαν (φωτοσταθμών, σημείων λεπτομερείων, σημείων τομών κ.τ.λ.) σε ενιαίο σύστημα συντεταγμένων (Εικ. 1). Ας σημειωθεί ότι δεν προδιεγράφη συγκεκριμένο σύστημα συντεταγμένων στο οποίο θα έπρεπε να εναχθεί η εργασία. Επιπλέον, ιδρύθηκε ένα αυθαίρετο τριορθογώνιο καρτεσιανό σύστημα συντεταγμένων. Ωστόσο, πραγματοποιήθηκε ένταξη στο κρατικό σύστημα (ΕΓΣΑ'87) με τις ελάχιστες δεσμεύσεις για την σύνταξη και παραδότηση του γενικού τοπογραφικού (ΤΟ1).

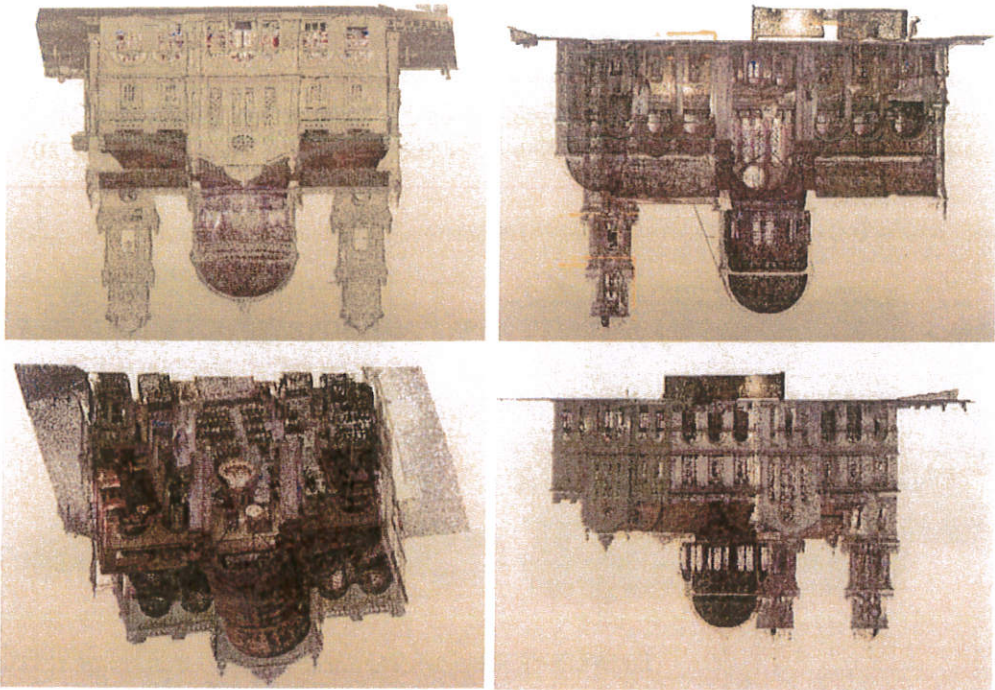


ΕΡΕΥΝΗΤΙΚΕΣ ΕΡΓΑΣΙΕΣ ΚΑΙ ΔΙΕΡΕΥΝΗΣΗ ΒΕΒΑΤΙΣΤΩΝ ΑΥΞΕΩΝ ΑΠΟΚΑΤΑΣΤΑΣΗΣ-ΕΝΙΣΧΥΣΗΣ
ΦΕΡΟΝΤΟΣ ΟΡΓΑΝΙΣΜΟΥ ΙΕΡΟΥ ΝΑΟΥ ΑΓΙΟΥ ΜΗΝΑ ΗΡΑΚΛΕΙΟΥ ΚΡΗΤΗΣ



Εικόνα 1: Σκαρίφημα των κορυφών του πολυγωνομετρικού δικτύου.

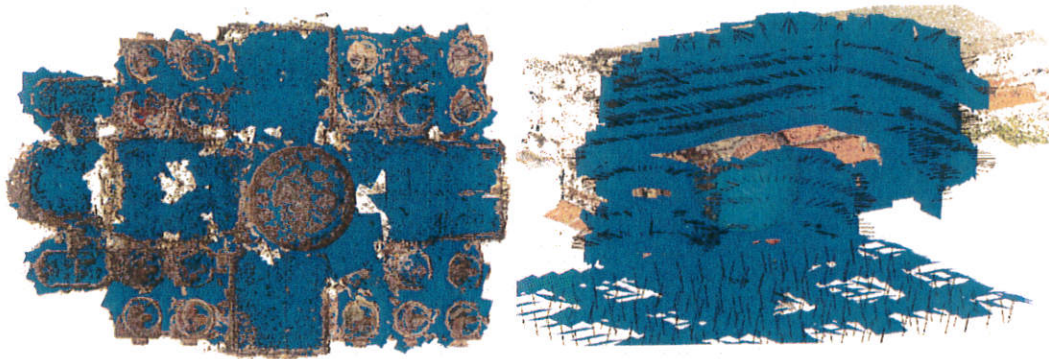
- Σάρωσεις με τον επίγειο σαρωτή Laser Leica BLK360 Imaging Scanner με δυνατότητα καταγραφής 360.000 σημείων το δευτερόλεπτο και ακρίβεια 4mm στα 10m και 7mm στα 20m. Σαρρώθηκαν όλες οι προς τεκμηρίωση επιφάνειες (εσωτερικό & εξωτερικό του ναού, υπόγειο δεξιάμενη, κωδωνοστάσια) με κατάλληλη πυκνότητα σημείων (Εικ. 2).



Εικόνα 2: Στιγμιότυπα από το επεξεργασμένο νέφος των σαρώσεων.

Նշումներում նաև արտահայտվում է իր անհանգստությունը՝ արտահայտելով, որ Երևանում չկան համապատասխան ծախսերի և արժեքների հսկողություն, որոնցից հետևում է անհամապատասխանության առկայությանը։

Εικόνα 3: Στιγμιότυπα από τις προσανατολισμένες ψηφιακές εικόνες για το εσωτερικό και το εξωτερικό του ναού.



7. Եղևթանի համայնքի տարածքում գտնվող հողերի օգտագործման համապատասխանության հարցը:

6. την επάρκεια των παρικών στοιχείων των ληγώντων λέξεων

‘ΕΛΛΗΝΙΚΗ ΔΗΜΟΚΡΑΤΙΑ
ΥΠΟΥΡΓΕΙΟ ΠΑΙΔΕΙΑΣ, ΕΡΕΥΝΑΣ ΚΑΙ ΘΡΗΣΚΕΥΜΑΤΩΝ

[illegible]

3),

4. τον προσανατολισμό των ψηφιακών εκδόσεων με βάση τα μετρηθέντα σταθμά σήμεια (Eik.

၆၁၃၀၇၀၀

Նույն օրոք ԼՂՀ-ում ԼՂՀ-ում (քրեականացված առևտրական) շահագործվել է և՛:

2. թույլ տրվում է օգտագործել հետևյալ հոդերը՝

1. την επίλυση του προβλήματος δικτύου,

ԱՆՈՒՄԱՆՈՒՄ ԵՎ ԵՐԱՅԻՄԱՆ ԵՐԱՅԻՄԱՆ ԵՐԱՅԻՄԱՆ:

ΛΑΛΩΛΑΡΑΡΑ ΛΑΚΙΛΕΙ ΛΑΙ ΙΛΛΑΡΑΡΑ ΛΗΙ ΟΧΟΙΟ ΕΙΛ ΑΜΙΕΧΙΟΙΟ ΑΜΙΛΕΛΕΛΛΗΟ ΛΑΙ ΜΙΟΜΛΕΛΕΛΕΙΟ Η

3. Επιχειρησιακά Στοιχεία

- Συνολικός έλεγχος πραγματοποιήθηκαν περίπου 260 σημεία και πραγματοποιήθηκαν 4399 ήχηρις με το UAS για το ελπίοκό του ναο, αλλὰ και 3040 ήχηρις με την ψιφιακή ηηΧΑνη υφηγής ανάλυσης για το εσωτερικό του ναο κερύω, αλλὰ και τα χαμηλά τμήματα του ελπίοκού του ναο. Επίσης πραγματοποιήθηκαν 215 σάρωσις όγκου περίπου 197GB.

Εύρος 2,5mm) στο εξωτερικό του ναού.

[illegible]



της κλίμακας 1:50, 1:100 και 1:200 των τελικών παραγώγων. Επιπλέον, ανατίθεται η
παροίμενη επεξεργασία των ορθοφωτογραφιών, ώστε να εξισορροπηθούν οι ανομοιογενείς
που είχαν προκύψει από τον διαφωτισμό όσο ήταν δυνατό.

Η αρχιτεκτονική σχεδίαση για την παραγωγή των αρχιτεκτονικών σχεδίων
παραγματοποιήθηκε κυρίως με βάση τις ορθοφωτογραφίες, αλλά και τις τομές από το τελικό
νέφος σημείων των σκαλωσών σε συνδυασμό με τις αρχικές ψηφιακές εικόνες και τις
συμβατικές μετρήσεις που πραγματοποιήθηκαν κατά τις εργασιές πεδίου, για σωστή
εμπνεσία και επαλήθευση των παραγόμενων προϊόντων. Η σχεδίαση παραγματοποιήθηκε
αντιθέτως σε ψηφιακό περιβάλλον και δόθηκε προσοχή στην τήρηση των κανόνων
υπαμετρικής για την ορθή απόδοση όλων των απαραίτητων λεπτομερειών.

4. Παραδοτέα

Σύμφωνα με τις απαιτήσεις του ερευνητικού προγράμματος τα παραδοτέα είναι τα εξής:

A. Αρχιτεκτονικά Σχέδια

- A.1. Κάτοψη Ισογείου (A01) κλίμακας 1:50
- A.2. Κάτοψη Ορόφου (A02) κλίμακας 1:50
- A.3. Κάτοψη Υπογείου (A03) κλίμακας 1:50
- A.4. Δυτική Όψη (A04) κλίμακας 1:50
- A.5. Νότια Όψη (A05) κλίμακας 1:50
- A.6. Ανατολική Όψη (A06) κλίμακας 1:50
- A.7. Τομή Δ1 (A07) κλίμακας 1:50
- A.8. Νότιο Κωδωνοστάσιο (A08) κλίμακας 1:50

B. Ορθοφωτοσκοπικά

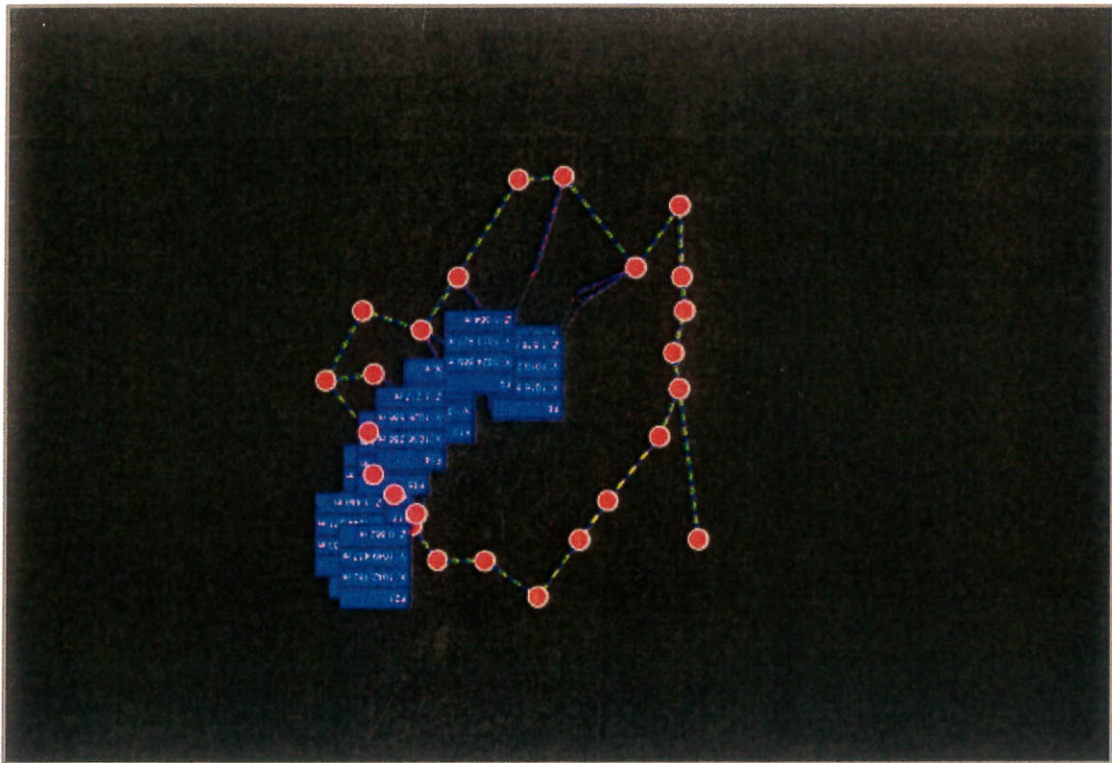
- O.1. Βόρεια Όψη (O01) κλίμακας 1:100
- O.2. Δυτική Όψη (A02) κλίμακας 1:100
- O.3. Νότια Όψη (A03) κλίμακας 1:100
- O.4. Ανατολική Όψη (A04) κλίμακας 1:100
- T.1. Κάτοψη-Γενικό Τοπογραφικό (T01) κλίμακας 1:200

ΜΑΡΤΑΡΙΑ Δ. ΣΚΑΜΑΝΤΖΑΡΗ
ΔΙΠΛ. ΑΡΧΙΤΕΚΤΟΝΙΚΗ ΣΧΕΔΙΑΣΤΡΙΑ Ε.Μ.Π.
ΜΕΛΟΣ ΤΗΣ ΑΡΧΗΣ ΜΗΤΡΟΥ 141713
ΟΕΣΔΑΚΟΝΙΚΗΣ 24 - ΚΗΦΙΣΙΑ Τ.Κ. 14561
ΑΦΜ: 132659916 - ΔΟΥ: ΚΗΦΙΣΙΑΣ
ΤΗΛ: 6977 068 506

Cyclone REGISTER 360 Registration Report



Outdoors-1



Overall Quality

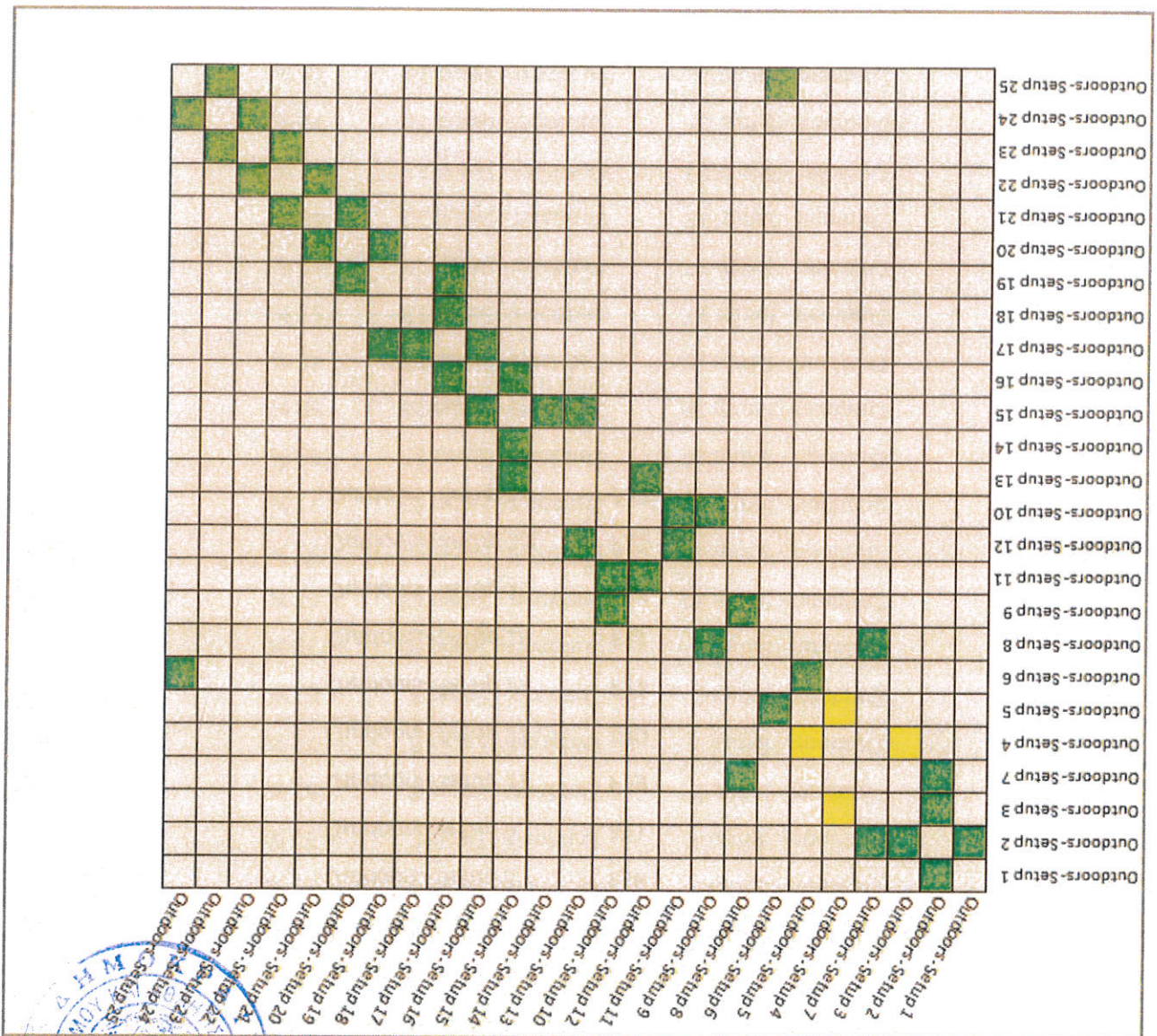
Error Results for Bundle 1


Setup Count: 25
Link Count: 25
Strength: 81 %
Overlap: 57 %

Bundle Error	0.009 m ✓
Strength	81 % ✓
Overlap	57 % ✓
Cloud-to-Cloud	0.009 m ✓
Target Error	--

Max error of 0.015 m.
 Max error of 0.020 m.
 Error greater than 0.020 m.

Link-Quality Matrix (1 of 1) -





Link Name	Setup 1	Setup 2	Overlap	Abs. Mean Error
Link 1	Outdoors- Setup 1	Outdoors- Setup 2	25 %	0.003 m
Cloud to Cloud				
Target				
Mean Target Error:				
				0.003 m

Link Name	Setup 1	Setup 2	Overlap	Abs. Mean Error
Link 2	Outdoors- Setup 2	Outdoors- Setup 3	44 %	0.009 m
Cloud to Cloud				
Target				
Mean Target Error:				
				0.009 m

Link Name	Setup 1	Setup 2	Overlap	Abs. Mean Error
Link 3	Outdoors- Setup 2	Outdoors- Setup 7	40 %	0.011 m
Cloud to Cloud				
Target				
Mean Target Error:				
				0.011 m

Link Name	Setup 1	Setup 2	Overlap	Abs. Mean Error
Link 15	Outdoors- Setup 3	Outdoors- Setup 4	55 %	0.019 m
Cloud to Cloud				
Target				
Mean Target Error:				
				0.019 m

Link Name	Setup 1	Setup 2	Overlap	Abs. Mean Error
Link 20	Outdoors- Setup 4	Outdoors- Setup 5	57 %	0.015 m
Cloud to Cloud				
Target				
Mean Target Error:				
				0.015 m

Link Name	Setup 1	Setup 2	Overlap	Abs. Mean Error
Link 21	Outdoors - Setup 5	Outdoors - Setup 6	52 %	0.011 m
Cloud to Cloud				
Target			Mean Target Error:	--

Link Name	Setup 1	Setup 2	Overlap	Abs. Mean Error
Link 22	Outdoors - Setup 7	Outdoors - Setup 8	72 %	0.006 m
Cloud to Cloud				
Target			Mean Target Error:	--

Link Name	Setup 1	Setup 2	Overlap	Abs. Mean Error
Link 23	Outdoors - Setup 8	Outdoors - Setup 9	87 %	0.008 m
Cloud to Cloud				
Target			Mean Target Error:	--

Link Name	Setup 1	Setup 2	Overlap	Abs. Mean Error
Link 24	Outdoors - Setup 9	Outdoors - Setup 10	73 %	0.011 m
Cloud to Cloud				
Target			Mean Target Error:	--

Link Name	Setup 1	Setup 2	Overlap	Abs. Mean Error
Link 4	Outdoors - Setup 11	Outdoors - Setup 12	67 %	0.013 m
Cloud to Cloud				
Target			Mean Target Error:	--



Link Name	Setup 1	Setup 2	Overlap	Abs. Mean Error
Link 5	Outdoors - Setup 11	Outdoors - Setup 10	75 %	0.010 m
Cloud to Cloud				
Target				
Mean Target Error:				
				0.010 m

Link Name	Setup 1	Setup 2	Overlap	Abs. Mean Error
Link 6	Outdoors - Setup 12	Outdoors - Setup 13	71 %	0.005 m
Cloud to Cloud				
Target				
Mean Target Error:				
				0.005 m

Link Name	Setup 1	Setup 2	Overlap	Abs. Mean Error
Link 8	Outdoors - Setup 14	Outdoors - Setup 15	69 %	0.004 m
Cloud to Cloud				
Target				
Mean Target Error:				
				0.004 m

Link Name	Setup 1	Setup 2	Overlap	Abs. Mean Error
Link 9	Outdoors - Setup 15	Outdoors - Setup 16	68 %	0.006 m
Cloud to Cloud				
Target				
Mean Target Error:				
				0.006 m

Link Name	Setup 1	Setup 2	Overlap	Abs. Mean Error
Link 10	Outdoors - Setup 16	Outdoors - Setup 17	46 %	0.009 m
Cloud to Cloud				
Target				
Mean Target Error:				
				0.009 m



Link Name	Setup 1	Setup 2	Overlap	Abs. Mean Error
Link 11	Outdoors - Setup 17	Outdoors - Setup 18	53 %	0.015 m
Cloud to Cloud				
Target				
Mean Target Error:				
--				

Link Name	Setup 1	Setup 2	Overlap	Abs. Mean Error
Link 12	Outdoors - Setup 17	Outdoors - Setup 19	40 %	0.009 m
Cloud to Cloud				
Target				
Mean Target Error:				
--				

Link Name	Setup 1	Setup 2	Overlap	Abs. Mean Error
Link 13	Outdoors - Setup 19	Outdoors - Setup 20	46 %	0.006 m
Cloud to Cloud				
Target				
Mean Target Error:				
--				

Link Name	Setup 1	Setup 2	Overlap	Abs. Mean Error
Link 14	Outdoors - Setup 20	Outdoors - Setup 21	67 %	0.005 m
Cloud to Cloud				
Target				
Mean Target Error:				
--				

Link Name	Setup 1	Setup 2	Overlap	Abs. Mean Error
Link 16	Outdoors - Setup 21	Outdoors - Setup 22	72 %	0.005 m
Cloud to Cloud				
Target				
Mean Target Error:				
--				



Link Name	Setup 1	Setup 2	Overlap	Abs. Mean Error
Link 17	Outdoors - Setup 22	Outdoors - Setup 23	75 %	0.009 m
Cloud to Cloud				
Target				Mean Target Error:
				--

Link Name	Setup 1	Setup 2	Overlap	Abs. Mean Error
Link 18	Outdoors - Setup 23	Outdoors - Setup 24	47 %	0.010 m
Cloud to Cloud				
Target				Mean Target Error:
				--

Link Name	Setup 1	Setup 2	Overlap	Abs. Mean Error
Link 19	Outdoors - Setup 24	Outdoors - Setup 25	53 %	0.009 m
Cloud to Cloud				
Target				Mean Target Error:
				--

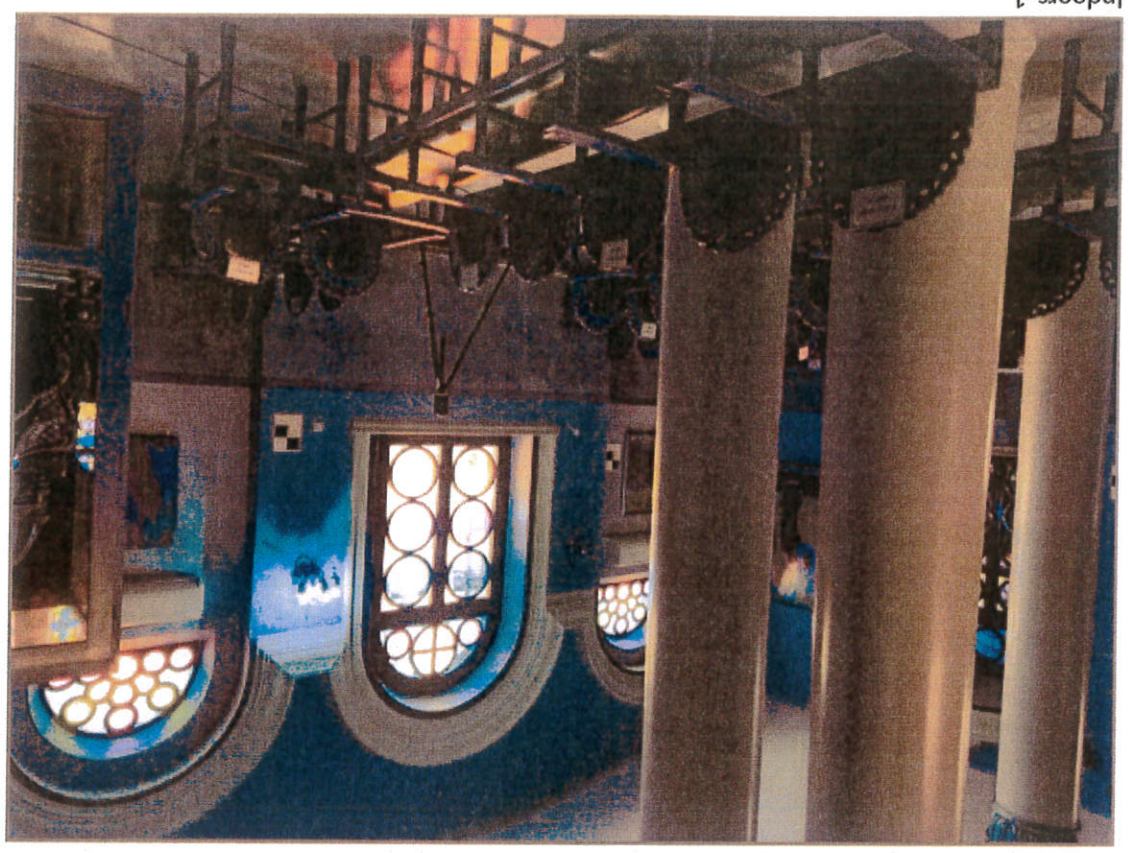
Link Name	Setup 1	Setup 2	Overlap	Abs. Mean Error
Link 52	Outdoors - Setup 25	Outdoors - Setup 6	56 %	0.013 m
Cloud to Cloud				
Target				Mean Target Error:
				--

Link Name	Setup 1	Setup 2	Overlap	Abs. Mean Error
Link 53	Outdoors - Setup 13	Outdoors - Setup 15	18 %	0.015 m
Cloud to Cloud				
Target				Mean Target Error:
				--

Graphics



Outdoors-1



Indoors-1

Link-Quality Matrix (3 of 4) -

Link Error Results



2 Details

Link Name	Setup 1	Setup 2	Overlap	Abs. Mean Error
Link 25	Indoors - Setup 1	Indoors - Setup 25	46 %	0.002 m
Link 26	Indoors - Setup 1	Indoors - Setup 26	51 %	0.002 m
Link 27	Indoors - Setup 1	Indoors - Setup 27	56 %	0.002 m
Link 28	Indoors - Setup 2	Indoors - Setup 13	69 %	0.003 m
Link 29	Indoors - Setup 2	Indoors - Setup 3	74 %	0.002 m
Link 30	Indoors - Setup 11	Indoors - Setup 5	89 %	0.002 m
Link 31	Indoors - Setup 12	Indoors - Setup 3	83 %	0.002 m
Link 32	Indoors - Setup 13	Indoors - Setup 14	44 %	0.002 m
Link 33	Indoors - Setup 14	Indoors - Setup 15	69 %	0.002 m
Link 34	Indoors - Setup 15	Indoors - Setup 16	88 %	0.003 m
Link 35	Indoors - Setup 17	Indoors - Setup 18	58 %	0.002 m
Link 36	Indoors - Setup 17	Indoors - Setup 10	43 %	0.002 m
Link 37	Indoors - Setup 18	Indoors - Setup 19	35 %	0.002 m
Link 38	Indoors - Setup 19	Indoors - Setup 20	60 %	0.002 m
Link 39	Indoors - Setup 3	Indoors - Setup 4	73 %	0.001 m
Link 40	Indoors - Setup 21	Indoors - Setup 22	77 %	0.007 m
Link 41	Indoors - Setup 21	Indoors - Setup 5	35 %	0.008 m
Link 42	Indoors - Setup 22	Indoors - Setup 23	65 %	0.003 m
Link 43	Indoors - Setup 23	Indoors - Setup 24	63 %	0.002 m
Link 44	Indoors - Setup 24	Indoors - Setup 25	28 %	0.003 m
Link 45	Indoors - Setup 27	Indoors - Setup 28	67 %	0.002 m
Link 46	Indoors - Setup 4	Indoors - Setup 5	88 %	0.002 m
Link 47	Indoors - Setup 5	Indoors - Setup 6	80 %	0.005 m
Link 48	Indoors - Setup 6	Indoors - Setup 7	80 %	0.005 m
Link 49	Indoors - Setup 7	Indoors - Setup 8	45 %	0.002 m
Link 50	Indoors - Setup 7	Indoors - Setup 9	76 %	0.005 m
Link 51	Indoors - Setup 9	Indoors - Setup 10	67 %	0.003 m

Link Name	Setup 1	Setup 2	Overlap	Abs. Mean Error
Link 25	Indoors - Setup 1	Indoors - Setup 25	46 %	0.002 m
Cloud to Cloud				
Target				
Mean Target Error:				
--				

Link Name	Setup 1	Setup 2	Overlap	Abs. Mean Error
Link 26	Indoors - Setup 1	Indoors - Setup 26	51 %	0.002 m
Cloud to Cloud				
Target				
Mean Target Error:				
--				

Link Name	Setup 1	Setup 2	Overlap	Abs. Mean Error
Link 27	Indoors - Setup 1	Indoors - Setup 27	56 %	0.002 m
Cloud to Cloud				
Target				
Mean Target Error:				
--				

Link Name	Setup 1	Setup 2	Overlap	Abs. Mean Error
Link 28	Indoors - Setup 2	Indoors - Setup 13	69 %	0.003 m
Cloud to Cloud				
Target				
Mean Target Error:				
--				

Link Name	Setup 1	Setup 2	Overlap	Abs. Mean Error
Link 29	Indoors - Setup 2	Indoors - Setup 3	74 %	0.002 m
Cloud to Cloud				
Target				
Mean Target Error:				
--				





Link Name	Setup 1	Setup 2	Overlap	Abs. Mean Error
Link 30	Indoors - Setup 11	Indoors - Setup 5	89 %	0.002 m
Cloud to Cloud				
Target				
Mean Target Error:				
--				

Link Name	Setup 1	Setup 2	Overlap	Abs. Mean Error
Link 31	Indoors - Setup 12	Indoors - Setup 3	83 %	0.002 m
Cloud to Cloud				
Target				
Mean Target Error:				
--				

Link Name	Setup 1	Setup 2	Overlap	Abs. Mean Error
Link 32	Indoors - Setup 13	Indoors - Setup 14	44 %	0.002 m
Cloud to Cloud				
Target				
Mean Target Error:				
--				

Link Name	Setup 1	Setup 2	Overlap	Abs. Mean Error
Link 33	Indoors - Setup 14	Indoors - Setup 15	69 %	0.002 m
Cloud to Cloud				
Target				
Mean Target Error:				
--				

Link Name	Setup 1	Setup 2	Overlap	Abs. Mean Error
Link 34	Indoors - Setup 15	Indoors - Setup 16	88 %	0.003 m
Cloud to Cloud				
Target				
Mean Target Error:				
--				



Link Name	Setup 1	Setup 2	Overlap	Abs. Mean Error
Link 35	Indoors - Setup 17	Indoors - Setup 18	58 %	0.0023
Cloud to Cloud				
Target				
Mean Target Error:				
--				

Link Name	Setup 1	Setup 2	Overlap	Abs. Mean Error
Link 36	Indoors - Setup 17	Indoors - Setup 10	43 %	0.002 m
Cloud to Cloud				
Target				
Mean Target Error:				
--				

Link Name	Setup 1	Setup 2	Overlap	Abs. Mean Error
Link 37	Indoors - Setup 18	Indoors - Setup 19	35 %	0.002 m
Cloud to Cloud				
Target				
Mean Target Error:				
--				

Link Name	Setup 1	Setup 2	Overlap	Abs. Mean Error
Link 38	Indoors - Setup 19	Indoors - Setup 20	60 %	0.002 m
Cloud to Cloud				
Target				
Mean Target Error:				
--				

Link Name	Setup 1	Setup 2	Overlap	Abs. Mean Error
Link 39	Indoors - Setup 3	Indoors - Setup 4	73 %	0.001 m
Cloud to Cloud				
Target				
Mean Target Error:				
--				



Link Name	Setup 1	Setup 2	Overlap	Abs. Mean Error
Link 40	Indoors - Setup 21	Indoors - Setup 22	77 %	0.007 m
Cloud to Cloud				
Target				
Mean Target Error:				
--				

Link Name	Setup 1	Setup 2	Overlap	Abs. Mean Error
Link 41	Indoors - Setup 21	Indoors - Setup 5	35 %	0.008 m
Cloud to Cloud				
Target				
Mean Target Error:				
--				

Link Name	Setup 1	Setup 2	Overlap	Abs. Mean Error
Link 42	Indoors - Setup 22	Indoors - Setup 23	65 %	0.003 m
Cloud to Cloud				
Target				
Mean Target Error:				
--				

Link Name	Setup 1	Setup 2	Overlap	Abs. Mean Error
Link 43	Indoors - Setup 23	Indoors - Setup 24	63 %	0.002 m
Cloud to Cloud				
Target				
Mean Target Error:				
--				

Link Name	Setup 1	Setup 2	Overlap	Abs. Mean Error
Link 44	Indoors - Setup 24	Indoors - Setup 25	28 %	0.003 m
Cloud to Cloud				
Target				
Mean Target Error:				
--				

Link Name	Setup 1	Setup 2	Overlap	Abs. Mean Error
Link 45	Indoors - Setup 27	Indoors - Setup 28	67 %	0.002 m

Cloud to Cloud
Target
Mean Target Error: 0.002 m

Link Name	Setup 1	Setup 2	Overlap	Abs. Mean Error
Link 46	Indoors - Setup 4	Indoors - Setup 5	88 %	0.002 m

Cloud to Cloud
Target
Mean Target Error: 0.002 m

Link Name	Setup 1	Setup 2	Overlap	Abs. Mean Error
Link 47	Indoors - Setup 5	Indoors - Setup 6	80 %	0.005 m

Cloud to Cloud
Target
Mean Target Error: 0.005 m

Link Name	Setup 1	Setup 2	Overlap	Abs. Mean Error
Link 48	Indoors - Setup 6	Indoors - Setup 7	80 %	0.005 m

Cloud to Cloud
Target
Mean Target Error: 0.005 m

Link Name	Setup 1	Setup 2	Overlap	Abs. Mean Error
Link 49	Indoors - Setup 7	Indoors - Setup 8	45 %	0.002 m

Cloud to Cloud
Target
Mean Target Error: 0.002 m





Link Name	Setup 1	Setup 2	Overlap	Abs. Mean Error
Link 50	Indoors - Setup 7	Indoors - Setup 9	76 %	0.005 m
Cloud to Cloud				
Target				
Mean Target Error:				
				0.005 m
				--

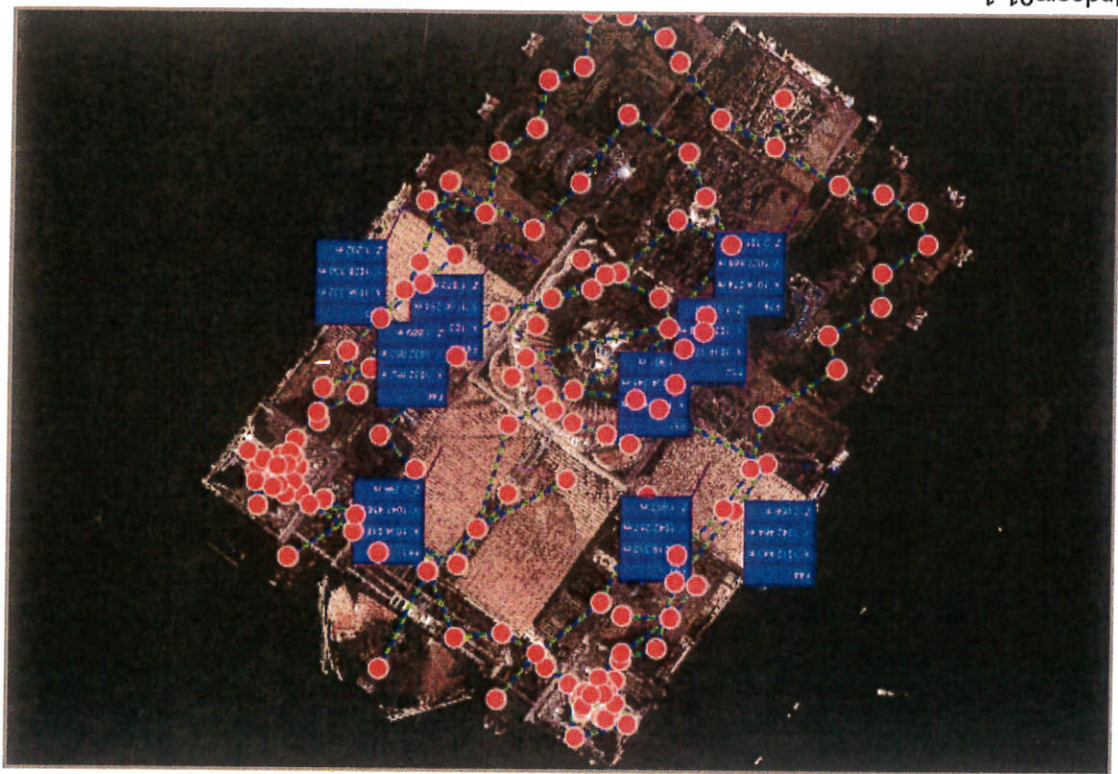
Link Name	Setup 1	Setup 2	Overlap	Abs. Mean Error
Link 51	Indoors - Setup 9	Indoors - Setup 10	67 %	0.003 m
Cloud to Cloud				
Target				
Mean Target Error:				
				0.003 m
				--

Cyclone REGISTER 360

Registration Report

Aug 1, 2020

Certified by:



Overall Quality

Error Results for Bundle 5

Setup Count: 144
Link Count: 144
Strength: 80 %
Overlap: 61 %

Bundle Error	0.003 m ✓
Strength	80 % ✓
Target Error	--

Cloud-to-Cloud
0.003 m ✓

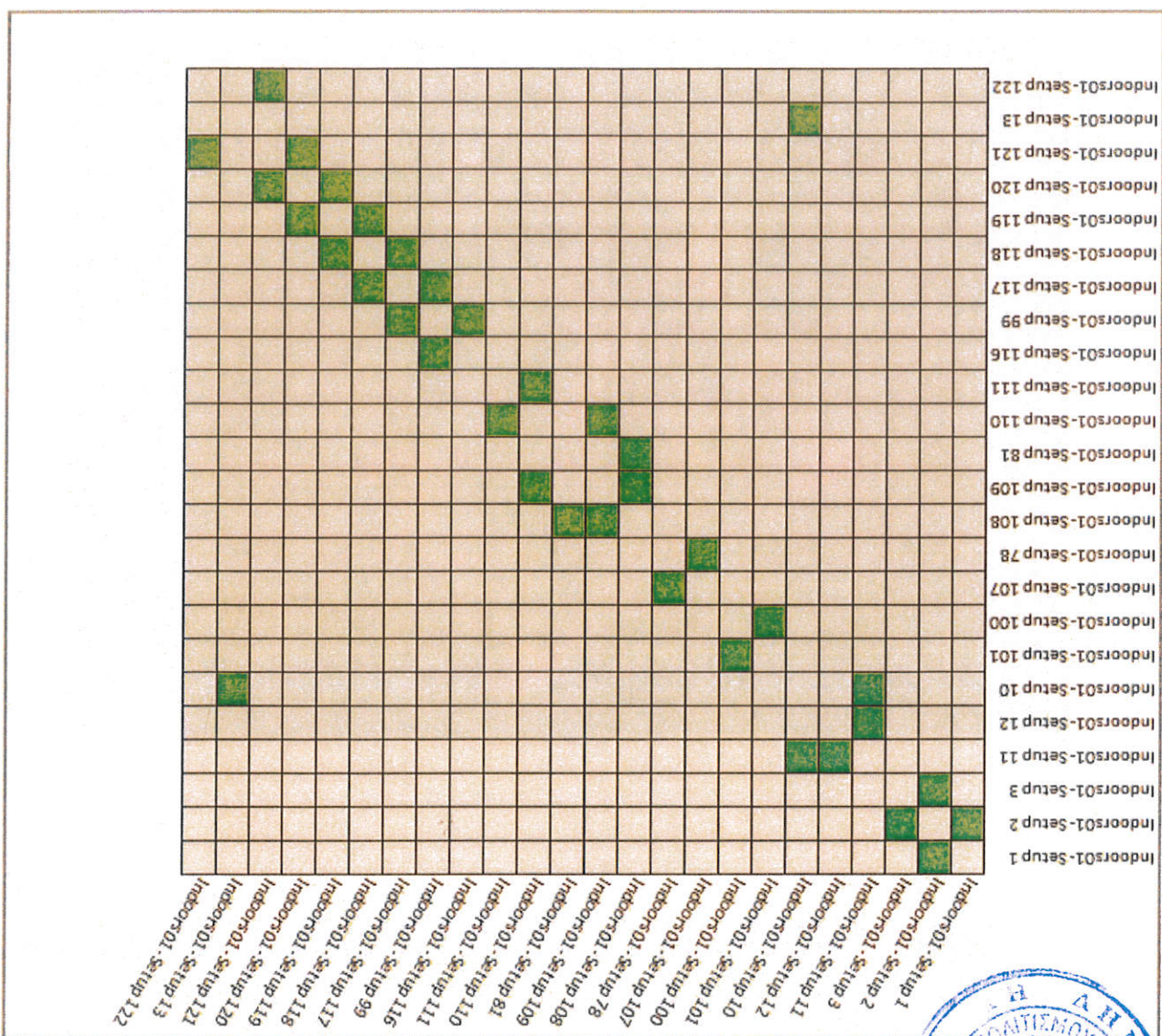
Overlap
61 % ✓

Strength
80 % ✓

Bundle Error
0.003 m ✓

Max error of 0.015 m.
 Max error of 0.020 m.
 Error greater than 0.020 m.

Link Quality Matrix (1 of 36) -



[illegible]

[illegible]

[illegible]

[illegible]

[illegible]

[illegible]

	Indoor01-Setup 123
	Indoor01-Setup 124
	Indoor01-Setup 125
	Indoor01-Setup 126
	Indoor01-Setup 127
	Indoor01-Setup 128
	Indoor01-Setup 129
	Indoor01-Setup 130
	Indoor01-Setup 131
	Indoor01-Setup 14
	Indoor01-Setup 8
	Indoor01-Setup 132
	Indoor01-Setup 133
	Indoor01-Setup 134
	Indoor01-Setup 135
	Indoor01-Setup 23
	Indoor01-Setup 136
	Indoor01-Setup 137
	Indoor01-Setup 18
	Indoor01-Setup 138
	Indoor01-Setup 139
	Indoor01-Setup 140
	Indoor01-Setup 141
	Indoor01-Setup 15

	Indoors01-Setup 123
	Indoors01-Setup 124
	Indoors01-Setup 125
	Indoors01-Setup 126
	Indoors01-Setup 127
	Indoors01-Setup 128
	Indoors01-Setup 129
	Indoors01-Setup 130
	Indoors01-Setup 131
	Indoors01-Setup 14
	Indoors01-Setup 8
	Indoors01-Setup 132
	Indoors01-Setup 133
	Indoors01-Setup 134
	Indoors01-Setup 135
	Indoors01-Setup 23
	Indoors01-Setup 136
	Indoors01-Setup 137
	Indoors01-Setup 18
	Indoors01-Setup 138
	Indoors01-Setup 139
	Indoors01-Setup 140
	Indoors01-Setup 141
	Indoors01-Setup 15

[illegible]

	Indoor01-Setup 16
	Indoor01-Setup 17
	Indoor01-Setup 142
	Indoor01-Setup 143
	Indoor01-Setup 144
	Indoor01-Setup 145
	Indoor01-Setup 146
	Indoor01-Setup 147
	Indoor01-Setup 148
	Indoor01-Setup 149
	Indoor01-Setup 150
	Indoor01-Setup 151
	Indoor01-Setup 152
	Indoor01-Setup 19
	Indoor01-Setup 20
	Indoor01-Setup 22
	Indoor01-Setup 62
	Indoor01-Setup 21
	Indoor01-Setup 31
	Indoor01-Setup 4
	Indoor01-Setup 5
	Indoor01-Setup 6
	Indoor01-Setup 24
	Indoor01-Setup 25

Indoor01-Setup 25
Indoor01-Setup 24
Indoor01-Setup 23
Indoor01-Setup 22
Indoor01-Setup 21
Indoor01-Setup 20
Indoor01-Setup 19
Indoor01-Setup 18
Indoor01-Setup 17
Indoor01-Setup 16
Indoor01-Setup 15
Indoor01-Setup 14
Indoor01-Setup 13
Indoor01-Setup 12
Indoor01-Setup 11
Indoor01-Setup 10
Indoor01-Setup 9
Indoor01-Setup 8
Indoor01-Setup 7
Indoor01-Setup 6
Indoor01-Setup 5
Indoor01-Setup 4
Indoor01-Setup 3
Indoor01-Setup 2
Indoor01-Setup 1

- Link-Quality Matrix (16 of 36)

	Indoors01-Setup 16
	Indoors01-Setup 17
	Indoors01-Setup 142
	Indoors01-Setup 143
	Indoors01-Setup 144
	Indoors01-Setup 145
	Indoors01-Setup 146
	Indoors01-Setup 147
	Indoors01-Setup 148
	Indoors01-Setup 149
	Indoors01-Setup 150
	Indoors01-Setup 151
	Indoors01-Setup 152
	Indoors01-Setup 19
	Indoors01-Setup 20
	Indoors01-Setup 22
	Indoors01-Setup 62
	Indoors01-Setup 21
	Indoors01-Setup 31
	Indoors01-Setup 4
	Indoors01-Setup 5
	Indoors01-Setup 6
	Indoors01-Setup 24
	Indoors01-Setup 25



[illegible]

	Indoors01-Setup 16
	Indoors01-Setup 17
	Indoors01-Setup 142
	Indoors01-Setup 143
	Indoors01-Setup 144
	Indoors01-Setup 145
	Indoors01-Setup 146
	Indoors01-Setup 147
	Indoors01-Setup 148
	Indoors01-Setup 149
	Indoors01-Setup 150
	Indoors01-Setup 151
	Indoors01-Setup 152
	Indoors01-Setup 19
	Indoors01-Setup 20
	Indoors01-Setup 22
	Indoors01-Setup 62
	Indoors01-Setup 21
	Indoors01-Setup 31
	Indoors01-Setup 4
	Indoors01-Setup 5
	Indoors01-Setup 6
	Indoors01-Setup 24
	Indoors01-Setup 25

	Indoor01-Setup 26
	Indoor01-Setup 27
	Indoor01-Setup 28
	Indoor01-Setup 29
	Indoor01-Setup 30
	Indoor01-Setup 35
	Indoor01-Setup 32
	Indoor01-Setup 33
	Indoor01-Setup 34
	Indoor01-Setup 36
	Indoor01-Setup 37
	Indoor01-Setup 38
	Indoor01-Setup 39
	Indoor01-Setup 40
	Indoor01-Setup 41
	Indoor01-Setup 42
	Indoor01-Setup 43
	Indoor01-Setup 44
	Indoor01-Setup 45
	Indoor01-Setup 46
	Indoor01-Setup 47
	Indoor01-Setup 49
	Indoor01-Setup 48
	Indoor01-Setup 50

[illegible]

The figure is a 50x50 grid representing the spatial distribution of 50 indoor setups. The grid is labeled 'Indoor01-Setup 26' to 'Indoor01-Setup 50' on the left and 'Indoor01-Setup 26' to 'Indoor01-Setup 50' on the top. Green squares indicate the location of each setup, showing a clear diagonal pattern from the bottom-left to the top-right.

	Indoors01-Setup 26
	Indoors01-Setup 27
	Indoors01-Setup 28
	Indoors01-Setup 29
	Indoors01-Setup 30
	Indoors01-Setup 35
	Indoors01-Setup 32
	Indoors01-Setup 33
	Indoors01-Setup 34
	Indoors01-Setup 36
	Indoors01-Setup 37
	Indoors01-Setup 38
	Indoors01-Setup 39
	Indoors01-Setup 40
	Indoors01-Setup 41
	Indoors01-Setup 42
	Indoors01-Setup 43
	Indoors01-Setup 44
	Indoors01-Setup 45
	Indoors01-Setup 46
	Indoors01-Setup 47
	Indoors01-Setup 49
	Indoors01-Setup 48
	Indoors01-Setup 50

	Indoors01-Setup 26
	Indoors01-Setup 27
	Indoors01-Setup 28
	Indoors01-Setup 29
	Indoors01-Setup 30
	Indoors01-Setup 35
	Indoors01-Setup 32
	Indoors01-Setup 33
	Indoors01-Setup 34
	Indoors01-Setup 36
	Indoors01-Setup 37
	Indoors01-Setup 38
	Indoors01-Setup 39
	Indoors01-Setup 40
	Indoors01-Setup 41
	Indoors01-Setup 42
	Indoors01-Setup 43
	Indoors01-Setup 44
	Indoors01-Setup 45
	Indoors01-Setup 46
	Indoors01-Setup 47
	Indoors01-Setup 49
	Indoors01-Setup 48
	Indoors01-Setup 50

[illegible]

	Indoors01-Setup 73
	Indoors01-Setup 72
	Indoors01-Setup 9
	Indoors01-Setup 71
	Indoors01-Setup 70
	Indoors01-Setup 69
	Indoors01-Setup 68
	Indoors01-Setup 67
	Indoors01-Setup 66
	Indoors01-Setup 65
	Indoors01-Setup 64
	Indoors01-Setup 63
	Indoors01-Setup 61
	Indoors01-Setup 60
	Indoors01-Setup 59
	Indoors01-Setup 58
	Indoors01-Setup 57
	Indoors01-Setup 56
	Indoors01-Setup 54
	Indoors01-Setup 53
	Indoors01-Setup 52
	Indoors01-Setup 7
	Indoors01-Setup 55
	Indoors01-Setup 51
Indoors01-Setup 16	
Indoors01-Setup 17	
Indoors01-Setup 142	
Indoors01-Setup 143	
Indoors01-Setup 144	
Indoors01-Setup 145	
Indoors01-Setup 146	
Indoors01-Setup 147	
Indoors01-Setup 148	
Indoors01-Setup 149	
Indoors01-Setup 150	
Indoors01-Setup 151	
Indoors01-Setup 152	
Indoors01-Setup 19	
Indoors01-Setup 20	
Indoors01-Setup 22	
Indoors01-Setup 62	
Indoors01-Setup 21	
Indoors01-Setup 31	
Indoors01-Setup 4	
Indoors01-Setup 5	
Indoors01-Setup 6	
Indoors01-Setup 24	
Indoors01-Setup 25	

- Link-Quality Matrix (28 of 36)

	Indoors01-Setup 51
	Indoors01-Setup 55
	Indoors01-Setup 7
	Indoors01-Setup 52
	Indoors01-Setup 53
	Indoors01-Setup 54
	Indoors01-Setup 56
	Indoors01-Setup 57
	Indoors01-Setup 58
	Indoors01-Setup 59
	Indoors01-Setup 60
	Indoors01-Setup 61
	Indoors01-Setup 63
	Indoors01-Setup 64
	Indoors01-Setup 65
	Indoors01-Setup 66
	Indoors01-Setup 67
	Indoors01-Setup 68
	Indoors01-Setup 69
	Indoors01-Setup 70
	Indoors01-Setup 71
	Indoors01-Setup 9
	Indoors01-Setup 72
	Indoors01-Setup 73

IndoorS01-Setup 73

IndoorS01-Setup 72

IndoorS01-Setup 9

IndoorS01-Setup 71

IndoorS01-Setup 70

IndoorS01-Setup 69

IndoorS01-Setup 68

IndoorS01-Setup 67

IndoorS01-Setup 66

IndoorS01-Setup 65

IndoorS01-Setup 64

IndoorS01-Setup 63

IndoorS01-Setup 61

IndoorS01-Setup 60

IndoorS01-Setup 59

IndoorS01-Setup 58

IndoorS01-Setup 57

IndoorS01-Setup 56

IndoorS01-Setup 54

IndoorS01-Setup 53

IndoorS01-Setup 52

IndoorS01-Setup 7

IndoorS01-Setup 55

IndoorS01-Setup 51

IndoorS01-Setup 51

IndoorS01-Setup 55

IndoorS01-Setup 7

IndoorS01-Setup 52

IndoorS01-Setup 53

IndoorS01-Setup 54

IndoorS01-Setup 56

IndoorS01-Setup 57

IndoorS01-Setup 58

IndoorS01-Setup 59

IndoorS01-Setup 60

IndoorS01-Setup 61

IndoorS01-Setup 63

IndoorS01-Setup 64

IndoorS01-Setup 65

IndoorS01-Setup 66

IndoorS01-Setup 67

IndoorS01-Setup 68

IndoorS01-Setup 69

IndoorS01-Setup 70

IndoorS01-Setup 71

IndoorS01-Setup 9

IndoorS01-Setup 72

IndoorS01-Setup 73

	Indoors01-Setup 51
	Indoors01-Setup 55
	Indoors01-Setup 7
	Indoors01-Setup 52
	Indoors01-Setup 53
	Indoors01-Setup 54
	Indoors01-Setup 56
	Indoors01-Setup 57
	Indoors01-Setup 58
	Indoors01-Setup 59
	Indoors01-Setup 60
	Indoors01-Setup 61
	Indoors01-Setup 63
	Indoors01-Setup 64
	Indoors01-Setup 65
	Indoors01-Setup 66
	Indoors01-Setup 67
	Indoors01-Setup 68
	Indoors01-Setup 69
	Indoors01-Setup 70
	Indoors01-Setup 71
	Indoors01-Setup 9
	Indoors01-Setup 72
	Indoors01-Setup 73

[illegible]

	Indoors01-Setup 74
	Indoors01-Setup 84
	Indoors01-Setup 75
	Indoors01-Setup 76
	Indoors01-Setup 77
	Indoors01-Setup 79
	Indoors01-Setup 80
	Indoors01-Setup 82
	Indoors01-Setup 83
	Indoors01-Setup 85
	Indoors01-Setup 86
	Indoors01-Setup 87
	Indoors01-Setup 88
	Indoors01-Setup 89
	Indoors01-Setup 90
	Indoors01-Setup 91
	Indoors01-Setup 92
	Indoors01-Setup 93
	Indoors01-Setup 94
	Indoors01-Setup 95
	Indoors01-Setup 96
	Indoors01-Setup 97
	Indoors01-Setup 98
	Indoors01-Setup 102

[illegible]



[illegible]

Link-Quality Matrix (36 of 36) -

Indoor01-Setup 74
Indoor01-Setup 75
Indoor01-Setup 76
Indoor01-Setup 77
Indoor01-Setup 79
Indoor01-Setup 80
Indoor01-Setup 82
Indoor01-Setup 83
Indoor01-Setup 85
Indoor01-Setup 86
Indoor01-Setup 87
Indoor01-Setup 88
Indoor01-Setup 89
Indoor01-Setup 90
Indoor01-Setup 91
Indoor01-Setup 92
Indoor01-Setup 93
Indoor01-Setup 94
Indoor01-Setup 95
Indoor01-Setup 96
Indoor01-Setup 97
Indoor01-Setup 98
Indoor01-Setup 99
Indoor01-Setup 100
Indoor01-Setup 101
Indoor01-Setup 102

Survey Report

Abs Mean Error of Control to 'Bundle 5': 0.003 m

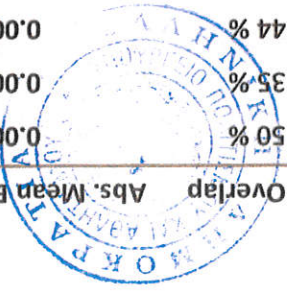


Bundle Name	Setup	Label	Error
Bundle 5	Indoors01- Setup 23	F79	0.002 m
	Indoors01- Setup 62	F44	0.002 m
	Indoors01- Setup 21	F47	0.003 m
	Indoors01- Setup 20	F46	0.002 m
	Indoors01- Setup 30	F53	0.000 m
	Indoors01- Setup 16	F61	0.001 m
	Indoors01- Setup 135	F51	0.004 m
	Indoors01- Setup 23	F52	0.003 m
	Indoors01- Setup 19	F50	0.001 m
	Indoors01- Setup 17	F61	0.006 m

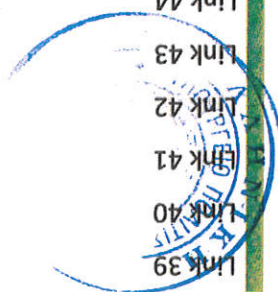
Link Error Results

1 Overview

Link Name	Setup 1	Setup 2	Overlap	Abs. Mean Error
Link 1	Indoors01- Setup 1	Indoors01- Setup 2	50 %	0.004 m
Link 2	Indoors01- Setup 2	Indoors01- Setup 3	35 %	0.002 m
Link 3	Indoors01- Setup 11	Indoors01- Setup 12	44 %	0.002 m
Link 4	Indoors01- Setup 11	Indoors01- Setup 10	75 %	0.002 m
Link 5	Indoors01- Setup 101	Indoors01- Setup 100	48 %	0.003 m
Link 9	Indoors01- Setup 107	Indoors01- Setup 78	66 %	0.003 m
Link 10	Indoors01- Setup 108	Indoors01- Setup 109	13 %	0.008 m
Link 11	Indoors01- Setup 108	Indoors01- Setup 81	46 %	0.005 m
Link 12	Indoors01- Setup 109	Indoors01- Setup 110	24 %	0.006 m
Link 13	Indoors01- Setup 110	Indoors01- Setup 111	29 %	0.004 m
Link 16	Indoors01- Setup 116	Indoors01- Setup 99	85 %	0.002 m
Link 17	Indoors01- Setup 117	Indoors01- Setup 118	59 %	0.002 m
Link 18	Indoors01- Setup 117	Indoors01- Setup 99	76 %	0.003 m
Link 19	Indoors01- Setup 118	Indoors01- Setup 119	74 %	0.003 m
Link 20	Indoors01- Setup 119	Indoors01- Setup 120	44 %	0.002 m
Link 21	Indoors01- Setup 120	Indoors01- Setup 121	64 %	0.002 m
Link 22	Indoors01- Setup 13	Indoors01- Setup 10	57 %	0.002 m
Link 23	Indoors01- Setup 121	Indoors01- Setup 122	59 %	0.002 m
Link 24	Indoors01- Setup 122	Indoors01- Setup 123	66 %	0.004 m
Link 25	Indoors01- Setup 123	Indoors01- Setup 124	53 %	0.002 m
Link 26	Indoors01- Setup 124	Indoors01- Setup 125	59 %	0.002 m
Link 27	Indoors01- Setup 125	Indoors01- Setup 126	50 %	0.002 m
Link 28	Indoors01- Setup 126	Indoors01- Setup 127	85 %	0.002 m
Link 29	Indoors01- Setup 127	Indoors01- Setup 128	89 %	0.003 m
Link 30	Indoors01- Setup 128	Indoors01- Setup 129	83 %	0.002 m
Link 31	Indoors01- Setup 129	Indoors01- Setup 130	59 %	0.003 m
Link 32	Indoors01- Setup 130	Indoors01- Setup 131	56 %	0.004 m
Link 33	Indoors01- Setup 14	Indoors01- Setup 8	54 %	0.002 m
Link 34	Indoors01- Setup 131	Indoors01- Setup 132	66 %	0.004 m
Link 35	Indoors01- Setup 132	Indoors01- Setup 133	64 %	0.002 m
Link 36	Indoors01- Setup 134	Indoors01- Setup 135	71 %	0.006 m
Link 37	Indoors01- Setup 134	Indoors01- Setup 23	76 %	0.005 m
Link 38	Indoors01- Setup 136	Indoors01- Setup 137	33 %	0.003 m



Link 39	Indoors01- Setup 136	Indoors01- Setup 18	60 %	0.004 m
Link 40	Indoors01- Setup 137	Indoors01- Setup 138	91 %	0.002 m
Link 41	Indoors01- Setup 137	Indoors01- Setup 139	80 %	0.002 m
Link 42	Indoors01- Setup 139	Indoors01- Setup 140	95 %	0.004 m
Link 43	Indoors01- Setup 140	Indoors01- Setup 141	86 %	0.002 m
Link 44	Indoors01- Setup 15	Indoors01- Setup 16	70 %	0.008 m
Link 45	Indoors01- Setup 15	Indoors01- Setup 17	71 %	0.007 m
Link 46	Indoors01- Setup 15	Indoors01- Setup 8	33 %	0.002 m
Link 47	Indoors01- Setup 141	Indoors01- Setup 142	83 %	0.002 m
Link 48	Indoors01- Setup 142	Indoors01- Setup 143	84 %	0.002 m
Link 49	Indoors01- Setup 143	Indoors01- Setup 144	79 %	0.002 m
Link 50	Indoors01- Setup 144	Indoors01- Setup 145	82 %	0.005 m
Link 51	Indoors01- Setup 145	Indoors01- Setup 146	82 %	0.003 m
Link 52	Indoors01- Setup 146	Indoors01- Setup 147	93 %	0.003 m
Link 53	Indoors01- Setup 146	Indoors01- Setup 148	72 %	0.002 m
Link 54	Indoors01- Setup 148	Indoors01- Setup 149	75 %	0.003 m
Link 55	Indoors01- Setup 149	Indoors01- Setup 150	86 %	0.002 m
Link 56	Indoors01- Setup 149	Indoors01- Setup 151	75 %	0.004 m
Link 57	Indoors01- Setup 151	Indoors01- Setup 152	89 %	0.004 m
Link 58	Indoors01- Setup 17	Indoors01- Setup 18	76 %	0.007 m
Link 59	Indoors01- Setup 18	Indoors01- Setup 19	76 %	0.007 m
Link 60	Indoors01- Setup 18	Indoors01- Setup 20	62 %	0.006 m
Link 61	Indoors01- Setup 19	Indoors01- Setup 22	73 %	0.007 m
Link 62	Indoors01- Setup 19	Indoors01- Setup 62	56 %	0.007 m
Link 63	Indoors01- Setup 20	Indoors01- Setup 21	64 %	0.006 m
Link 64	Indoors01- Setup 20	Indoors01- Setup 31	73 %	0.003 m
Link 65	Indoors01- Setup 3	Indoors01- Setup 4	67 %	0.003 m
Link 66	Indoors01- Setup 3	Indoors01- Setup 5	38 %	0.006 m
Link 67	Indoors01- Setup 3	Indoors01- Setup 6	64 %	0.003 m
Link 68	Indoors01- Setup 22	Indoors01- Setup 23	67 %	0.006 m
Link 69	Indoors01- Setup 23	Indoors01- Setup 24	74 %	0.004 m
Link 70	Indoors01- Setup 24	Indoors01- Setup 25	73 %	0.005 m
Link 71	Indoors01- Setup 25	Indoors01- Setup 26	67 %	0.005 m
Link 72	Indoors01- Setup 26	Indoors01- Setup 27	72 %	0.004 m
Link 73	Indoors01- Setup 27	Indoors01- Setup 28	45 %	0.006 m
Link 74	Indoors01- Setup 28	Indoors01- Setup 29	75 %	0.005 m
Link 75	Indoors01- Setup 29	Indoors01- Setup 30	48 %	0.006 m



Link 76	Indoors01- Setup 30	Indoors01- Setup 35	52 %	0.002 m
Link 77	Indoors01- Setup 31	Indoors01- Setup 32	47 %	0.002 m
Link 78	Indoors01- Setup 32	Indoors01- Setup 33	66 %	0.002 m
Link 79	Indoors01- Setup 34	Indoors01- Setup 35	50 %	0.003 m
Link 80	Indoors01- Setup 34	Indoors01- Setup 36	57 %	0.002 m
Link 81	Indoors01- Setup 36	Indoors01- Setup 37	71 %	0.002 m
Link 82	Indoors01- Setup 37	Indoors01- Setup 38	70 %	0.002 m
Link 83	Indoors01- Setup 38	Indoors01- Setup 39	62 %	0.002 m
Link 84	Indoors01- Setup 39	Indoors01- Setup 40	60 %	0.002 m
Link 85	Indoors01- Setup 40	Indoors01- Setup 41	61 %	0.002 m
Link 86	Indoors01- Setup 41	Indoors01- Setup 42	33 %	0.002 m
Link 87	Indoors01- Setup 42	Indoors01- Setup 43	56 %	0.002 m
Link 88	Indoors01- Setup 43	Indoors01- Setup 44	38 %	0.002 m
Link 89	Indoors01- Setup 44	Indoors01- Setup 45	50 %	0.002 m
Link 90	Indoors01- Setup 45	Indoors01- Setup 46	60 %	0.002 m
Link 91	Indoors01- Setup 46	Indoors01- Setup 47	43 %	0.002 m
Link 92	Indoors01- Setup 47	Indoors01- Setup 49	49 %	0.002 m
Link 93	Indoors01- Setup 48	Indoors01- Setup 49	85 %	0.002 m
Link 94	Indoors01- Setup 48	Indoors01- Setup 50	49 %	0.002 m
Link 95	Indoors01- Setup 50	Indoors01- Setup 51	58 %	0.006 m
Link 96	Indoors01- Setup 50	Indoors01- Setup 55	50 %	0.004 m
Link 97	Indoors01- Setup 6	Indoors01- Setup 7	80 %	0.003 m
Link 98	Indoors01- Setup 51	Indoors01- Setup 52	57 %	0.006 m
Link 99	Indoors01- Setup 52	Indoors01- Setup 53	44 %	0.006 m
Link 100	Indoors01- Setup 53	Indoors01- Setup 54	66 %	0.003 m
Link 101	Indoors01- Setup 55	Indoors01- Setup 56	58 %	0.005 m
Link 102	Indoors01- Setup 56	Indoors01- Setup 57	50 %	0.006 m
Link 103	Indoors01- Setup 57	Indoors01- Setup 58	39 %	0.009 m
Link 104	Indoors01- Setup 58	Indoors01- Setup 59	49 %	0.006 m
Link 105	Indoors01- Setup 58	Indoors01- Setup 100	35 %	0.008 m
Link 106	Indoors01- Setup 59	Indoors01- Setup 60	28 %	0.003 m
Link 107	Indoors01- Setup 60	Indoors01- Setup 61	15 %	0.005 m
Link 108	Indoors01- Setup 7	Indoors01- Setup 8	65 %	0.002 m
Link 109	Indoors01- Setup 62	Indoors01- Setup 63	67 %	0.003 m
Link 110	Indoors01- Setup 63	Indoors01- Setup 64	47 %	0.003 m
Link 111	Indoors01- Setup 64	Indoors01- Setup 65	77 %	0.002 m
Link 112	Indoors01- Setup 65	Indoors01- Setup 66	78 %	0.005 m





Link 113	Indoors01- Setup 66	69 %	0.002 m
Link 114	Indoors01- Setup 67	68 %	0.002 m
Link 115	Indoors01- Setup 68	65 %	0.002 m
Link 116	Indoors01- Setup 69	56 %	0.002 m
Link 117	Indoors01- Setup 70	50 %	0.002 m
Link 118	Indoors01- Setup 71	76 %	0.002 m
Link 119	Indoors01- Setup 72	51 %	0.002 m
Link 120	Indoors01- Setup 73	57 %	0.002 m
Link 121	Indoors01- Setup 74	25 %	0.002 m
Link 122	Indoors01- Setup 84	57 %	0.002 m
Link 123	Indoors01- Setup 75	70 %	0.002 m
Link 124	Indoors01- Setup 76	54 %	0.002 m
Link 125	Indoors01- Setup 77	40 %	0.002 m
Link 126	Indoors01- Setup 78	31 %	0.002 m
Link 127	Indoors01- Setup 79	55 %	0.002 m
Link 128	Indoors01- Setup 80	38 %	0.002 m
Link 129	Indoors01- Setup 82	91 %	0.002 m
Link 130	Indoors01- Setup 10	79 %	0.003 m
Link 131	Indoors01- Setup 83	66 %	0.004 m
Link 132	Indoors01- Setup 83	69 %	0.003 m
Link 133	Indoors01- Setup 85	58 %	0.004 m
Link 134	Indoors01- Setup 86	48 %	0.002 m
Link 135	Indoors01- Setup 87	68 %	0.002 m
Link 136	Indoors01- Setup 88	34 %	0.002 m
Link 137	Indoors01- Setup 89	80 %	0.003 m
Link 138	Indoors01- Setup 90	72 %	0.004 m
Link 139	Indoors01- Setup 91	53 %	0.004 m
Link 140	Indoors01- Setup 92	65 %	0.004 m
Link 141	Indoors01- Setup 93	55 %	0.003 m
Link 142	Indoors01- Setup 94	69 %	0.004 m
Link 143	Indoors01- Setup 95	52 %	0.002 m
Link 144	Indoors01- Setup 96	67 %	0.004 m
Link 145	Indoors01- Setup 97	50 %	0.002 m
Link 146	Indoors01- Setup 98	59 %	0.002 m
Link 147	Indoors01- Setup 99	60 %	0.002 m
Link 148	Indoors01- Setup 53	51 %	0.009 m
Link 149	Indoors01- Setup 58	27 %	0.013 m

2 Details

Link Name	Setup 1	Setup 2	Overlap	Abs. Mean Error
Link 1	Indoors01-Setup 1	Indoors01-Setup 2	50 %	0.004 m
Cloud to Cloud				
Target				
Mean Target Error:				
--				

Link Name	Setup 1	Setup 2	Overlap	Abs. Mean Error
Link 2	Indoors01-Setup 2	Indoors01-Setup 3	35 %	0.002 m
Cloud to Cloud				
Target				
Mean Target Error:				
--				

Link Name	Setup 1	Setup 2	Overlap	Abs. Mean Error
Link 3	Indoors01-Setup 11	Indoors01-Setup 12	44 %	0.002 m
Cloud to Cloud				
Target				
Mean Target Error:				
--				

Link Name	Setup 1	Setup 2	Overlap	Abs. Mean Error
Link 4	Indoors01-Setup 11	Indoors01-Setup 10	75 %	0.002 m
Cloud to Cloud				
Target				
Mean Target Error:				
--				





Link 5	Indoors01-Setup 101	Indoors01-Setup 100	48 %	0.003 m	0.003 m	Mean Target Error: --
Cloud to Cloud						
Target	Mean Target Error: --					
Link Name	Setup 1	Setup 2	Overlap	Abs. Mean Error		
Link 9	Indoors01-Setup 107	Indoors01-Setup 78	66 %	0.003 m	0.003 m	Mean Target Error: --
Cloud to Cloud						
Target	Mean Target Error: --					
Link Name	Setup 1	Setup 2	Overlap	Abs. Mean Error		
Link 10	Indoors01-Setup 108	Indoors01-Setup 109	13 %	0.008 m	0.008 m	Mean Target Error: --
Cloud to Cloud						
Target	Mean Target Error: --					
Link Name	Setup 1	Setup 2	Overlap	Abs. Mean Error		
Link 11	Indoors01-Setup 108	Indoors01-Setup 81	46 %	0.005 m	0.005 m	Mean Target Error: --
Cloud to Cloud						
Target	Mean Target Error: --					



Link Name	Setup 1	Setup 2	Overlap	Abs. Mean Error
Link 12	Indoors01 - Setup 109	Indoors01 - Setup 110	24 %	0.006 m
Cloud to Cloud				0.006 m
Target				Mean Target Error: --

Link Name	Setup 1	Setup 2	Overlap	Abs. Mean Error
Link 13	Indoors01 - Setup 110	Indoors01 - Setup 111	29 %	0.004 m
Cloud to Cloud				0.004 m
Target				Mean Target Error: --

Link Name	Setup 1	Setup 2	Overlap	Abs. Mean Error
Link 16	Indoors01 - Setup 116	Indoors01 - Setup 99	85 %	0.002 m
Cloud to Cloud				0.002 m
Target				Mean Target Error: --

Link Name	Setup 1	Setup 2	Overlap	Abs. Mean Error
Link 17	Indoors01 - Setup 117	Indoors01 - Setup 118	59 %	0.002 m
Cloud to Cloud				0.002 m
Target				Mean Target Error: --

Link Name	Setup 1	Setup 2	Overlap	Abs. Mean Error
Link 21	Indoors01- Setup 120	Indoors01- Setup 121	64 %	0.002 m
Cloud to Cloud				
Target				
Mean Target Error:				
--				

Link Name	Setup 1	Setup 2	Overlap	Abs. Mean Error
Link 20	Indoors01- Setup 119	Indoors01- Setup 120	44 %	0.002 m
Cloud to Cloud				
Target				
Mean Target Error:				
--				

Link Name	Setup 1	Setup 2	Overlap	Abs. Mean Error
Link 19	Indoors01- Setup 118	Indoors01- Setup 119	74 %	0.003 m
Cloud to Cloud				
Target				
Mean Target Error:				
--				

Link Name	Setup 1	Setup 2	Overlap	Abs. Mean Error
Link 18	Indoors01- Setup 117	Indoors01- Setup 99	76 %	0.003 m
Cloud to Cloud				
Target				
Mean Target Error:				
--				



Link Name	Setup 1	Setup 2	Overlap	Abs. Mean Error
Link 25	Indoors01 - Setup 123	Indoors01 - Setup 124	53 %	0.002 m
Cloud to Cloud				
Target				Mean Target Error: --

Link Name	Setup 1	Setup 2	Overlap	Abs. Mean Error
Link 24	Indoors01 - Setup 122	Indoors01 - Setup 123	66 %	0.004 m
Cloud to Cloud				
Target				Mean Target Error: --

Link Name	Setup 1	Setup 2	Overlap	Abs. Mean Error
Link 23	Indoors01 - Setup 121	Indoors01 - Setup 122	59 %	0.002 m
Cloud to Cloud				
Target				Mean Target Error: --

Link Name	Setup 1	Setup 2	Overlap	Abs. Mean Error
Link 22	Indoors01 - Setup 13	Indoors01 - Setup 10	57 %	0.002 m
Cloud to Cloud				
Target				Mean Target Error: --



Link Name	Setup 1	Setup 2	Overlap	Abs. Mean Error
Link 29	Indoors01- Setup 127	Indoors01- Setup 128	89 %	0.003 m
Cloud to Cloud				
Target				
Mean Target Error:				
--				

Link Name	Setup 1	Setup 2	Overlap	Abs. Mean Error
Link 28	Indoors01- Setup 126	Indoors01- Setup 127	85 %	0.002 m
Cloud to Cloud				
Target				
Mean Target Error:				
--				

Link Name	Setup 1	Setup 2	Overlap	Abs. Mean Error
Link 27	Indoors01- Setup 125	Indoors01- Setup 126	50 %	0.002 m
Cloud to Cloud				
Target				
Mean Target Error:				
--				

Link Name	Setup 1	Setup 2	Overlap	Abs. Mean Error
Link 26	Indoors01- Setup 124	Indoors01- Setup 125	59 %	0.002 m
Cloud to Cloud				
Target				
Mean Target Error:				
--				



Link Name	Setup 1	Setup 2	Overlap	Abs. Mean Error
Link 30	Indoors01- Setup 128	Indoors01- Setup 129	83 %	0.002 m
Cloud to Cloud				
Target				
Mean Target Error: 0.002 m				
--				

Link Name	Setup 1	Setup 2	Overlap	Abs. Mean Error
Link 31	Indoors01- Setup 129	Indoors01- Setup 130	59 %	0.003 m
Cloud to Cloud				
Target				
Mean Target Error: 0.003 m				
--				

Link Name	Setup 1	Setup 2	Overlap	Abs. Mean Error
Link 32	Indoors01- Setup 130	Indoors01- Setup 131	56 %	0.004 m
Cloud to Cloud				
Target				
Mean Target Error: 0.004 m				
--				

Link Name	Setup 1	Setup 2	Overlap	Abs. Mean Error
Link 33	Indoors01- Setup 14	Indoors01- Setup 8	54 %	0.002 m
Cloud to Cloud				
Target				
Mean Target Error: 0.002 m				
--				





Link Name	Setup 1	Setup 2	Overlap	Abs. Mean Error
Link 34	Indoors01- Setup	Indoors01- Setup	66 %	0.004 m
	131	132		
Cloud to Cloud				
Target	Mean Target Error:			
	--			

Link Name	Setup 1	Setup 2	Overlap	Abs. Mean Error
Link 35	Indoors01- Setup	Indoors01- Setup	64 %	0.002 m
	132	133		
Cloud to Cloud				
Target	Mean Target Error:			
	--			

Link Name	Setup 1	Setup 2	Overlap	Abs. Mean Error
Link 36	Indoors01- Setup	Indoors01- Setup	71 %	0.006 m
	134	135		
Cloud to Cloud				
Target	Mean Target Error:			
	--			

Link Name	Setup 1	Setup 2	Overlap	Abs. Mean Error
Link 37	Indoors01- Setup	Indoors01- Setup	76 %	0.005 m
	134	23		
Cloud to Cloud				
Target	Mean Target Error:			
	--			

Link Name	Setup 1	Setup 2	Overlap	Abs. Mean Error
Link 41	Indoors01-Setup 137	Indoors01-Setup 139	80 %	0.002 m
Cloud to Cloud				
Target				Mean Target Error:
				--

Link Name	Setup 1	Setup 2	Overlap	Abs. Mean Error
Link 40	Indoors01-Setup 137	Indoors01-Setup 138	91 %	0.002 m
Cloud to Cloud				
Target				Mean Target Error:
				--

Link Name	Setup 1	Setup 2	Overlap	Abs. Mean Error
Link 39	Indoors01-Setup 136	Indoors01-Setup 18	60 %	0.004 m
Cloud to Cloud				
Target				Mean Target Error:
				--

Link Name	Setup 1	Setup 2	Overlap	Abs. Mean Error
Link 38	Indoors01-Setup 136	Indoors01-Setup 137	33 %	0.003 m
Cloud to Cloud				
Target				Mean Target Error:
				--



Link Name	Setup 1	Setup 2	Overlap	Abs. Mean Error
Link 93	Indoors01- Setup	Indoors01- Setup	85 %	0.002 m
	48	49		
Cloud to Cloud				
Target				Mean Target Error:
				--

Link Name	Setup 1	Setup 2	Overlap	Abs. Mean Error
Link 92	Indoors01- Setup	Indoors01- Setup	49 %	0.002 m
	47	49		
Cloud to Cloud				
Target				Mean Target Error:
				--

Link Name	Setup 1	Setup 2	Overlap	Abs. Mean Error
Link 91	Indoors01- Setup	Indoors01- Setup	43 %	0.002 m
	46	47		
Cloud to Cloud				
Target				Mean Target Error:
				--

Link Name	Setup 1	Setup 2	Overlap	Abs. Mean Error
Link 90	Indoors01- Setup	Indoors01- Setup	60 %	0.002 m
	45	46		
Cloud to Cloud				
Target				Mean Target Error:
				--



Link Name	Setup 1	Setup 2	Overlap	Abs. Mean Error
Link 101	Indoors01- Setup 55	Indoors01- Setup 56	58 %	0.005 m
Cloud to Cloud				
Target				Mean Target Error: 0.005 m

Link Name	Setup 1	Setup 2	Overlap	Abs. Mean Error
Link 100	Indoors01- Setup 53	Indoors01- Setup 54	66 %	0.003 m
Cloud to Cloud				
Target				Mean Target Error: 0.003 m

Link Name	Setup 1	Setup 2	Overlap	Abs. Mean Error
Link 99	Indoors01- Setup 52	Indoors01- Setup 53	44 %	0.006 m
Cloud to Cloud				
Target				Mean Target Error: 0.006 m

Link Name	Setup 1	Setup 2	Overlap	Abs. Mean Error
Link 98	Indoors01- Setup 51	Indoors01- Setup 52	57 %	0.006 m
Cloud to Cloud				
Target				Mean Target Error: 0.006 m



Link Name	Setup 1	Setup 2	Overlap	Abs. Mean Error
Link 105	Indoors01- Setup 58	Indoors01- Setup 100	35 %	0.008 m
Cloud to Cloud				
Target				0.008 m
Mean Target Error:				--

Link Name	Setup 1	Setup 2	Overlap	Abs. Mean Error
Link 104	Indoors01- Setup 58	Indoors01- Setup 59	49 %	0.006 m
Cloud to Cloud				0.006 m
Target				Mean Target Error:

Link Name	Setup 1	Setup 2	Overlap	Abs. Mean Error
Link 103	Indoors01- Setup 57	Indoors01- Setup 58	39 %	0.009 m
Cloud to Cloud				
Target	Mean Target Error:			--
				0.009 m

Link Name	Setup 1	Setup 2	Overlap	Abs. Mean Error
Link 102	Indoors01 - Setup 56	Indoors01 - Setup 57	50 %	0.006 m
		Cloud to Cloud		0.006 m
		Target		Mean Target Error:

Link Name	Setup 1	Setup 2	Overlap	Abs. Mean Error
Link 109	Indoors01- Setup 62	Indoors01- Setup 63	67 %	0.003 m
Cloud to Cloud				
Target				
Mean Target Error: --				

Link Name	Setup 1	Setup 2	Overlap	Abs. Mean Error
Link 108	Indoors01- Setup 7	Indoors01- Setup 8	65 %	0.002 m
Cloud to Cloud				
Target				
Mean Target Error: --				

Link Name	Setup 1	Setup 2	Overlap	Abs. Mean Error
Link 107	Indoors01- Setup 60	Indoors01- Setup 61	15 %	0.005 m
Cloud to Cloud				
Target				
Mean Target Error: --				

Link Name	Setup 1	Setup 2	Overlap	Abs. Mean Error
Link 106	Indoors01- Setup 59	Indoors01- Setup 60	28 %	0.003 m
Cloud to Cloud				
Target				
Mean Target Error: --				



Link Name	Setup 1	Setup 2	Overlap	Abs. Mean Error
Link 110	Indoors01 - Setup 63	Indoors01 - Setup 64	47 %	0.003 m
Cloud to Cloud				
Target				Mean Target Error: --

Link Name	Setup 1	Setup 2	Overlap	Abs. Mean Error
Link 111	Indoors01 - Setup 64	Indoors01 - Setup 65	77 %	0.002 m
Cloud to Cloud				
Target				Mean Target Error: --

Link Name	Setup 1	Setup 2	Overlap	Abs. Mean Error
Link 112	Indoors01 - Setup 65	Indoors01 - Setup 66	78 %	0.005 m
Cloud to Cloud				
Target				Mean Target Error: --

Link Name	Setup 1	Setup 2	Overlap	Abs. Mean Error
Link 113	Indoors01 - Setup 66	Indoors01 - Setup 67	69 %	0.002 m
Cloud to Cloud				
Target				Mean Target Error: --





Link Name	Setup 1	Setup 2	Overlap	Abs. Mean Error	Link 114
	Indoors01- Setup	Indoors01- Setup	68 %	0.002 m	
	67	68			
Cloud to cloud					0.002 m
Target					Mean Target Error: --

Link Name	Setup 1	Setup 2	Overlap	Abs. Mean Error	Link 115
	Indoors01- Setup	Indoors01- Setup	65 %	0.002 m	
	68	69			
Cloud to cloud					0.002 m
Target					Mean Target Error: --
Link Name	Setup 1	Setup 2	Overlap	Abs. Mean Error	Link 116
	Indoors01- Setup	Indoors01- Setup	56 %	0.002 m	
	69	70			
Cloud to cloud					0.002 m
Target					Mean Target Error: --
Link Name	Setup 1	Setup 2	Overlap	Abs. Mean Error	Link 117
	Indoors01- Setup	Indoors01- Setup	50 %	0.002 m	
	70	71			
Cloud to cloud					0.002 m
Target					Mean Target Error: --

Link Name	Setup 1	Setup 2	Overlap	Abs. Mean Error
Link 118	Indoors01-Setup 8	Indoors01-Setup 9	76 %	0.002 m
Cloud to Cloud				
Target				
Mean Target Error:				
--				

Link Name	Setup 1	Setup 2	Overlap	Abs. Mean Error
Link 119	Indoors01-Setup 71	Indoors01-Setup 72	51 %	0.002 m
Cloud to Cloud				
Target				
Mean Target Error:				
--				

Link Name	Setup 1	Setup 2	Overlap	Abs. Mean Error
Link 120	Indoors01-Setup 72	Indoors01-Setup 73	57 %	0.002 m
Cloud to Cloud				
Target				
Mean Target Error:				
--				

Link Name	Setup 1	Setup 2	Overlap	Abs. Mean Error
Link 121	Indoors01-Setup 72	Indoors01-Setup 74	25 %	0.002 m
Cloud to Cloud				
Target				
Mean Target Error:				
--				





Link Name	Setup 1	Setup 2	Overlap	Abs. Mean Error
Link 122	Indoors01 - Setup	Indoors01 - Setup	57 %	0.002 m
73		84		
Cloud to cloud				
Target				
Mean Target Error:				
--				
0.002 m				

Link Name	Setup 1	Setup 2	Overlap	Abs. Mean Error
Link 123	Indoors01 - Setup	Indoors01 - Setup	70 %	0.002 m
74		75		
Cloud to cloud				
Target				
Mean Target Error:				
--				
0.002 m				

Link Name	Setup 1	Setup 2	Overlap	Abs. Mean Error
Link 124	Indoors01 - Setup	Indoors01 - Setup	54 %	0.002 m
75		76		
Cloud to cloud				
Target				
Mean Target Error:				
--				
0.002 m				

Link Name	Setup 1	Setup 2	Overlap	Abs. Mean Error
Link 125	Indoors01 - Setup	Indoors01 - Setup	40 %	0.002 m
76		77		
Cloud to cloud				
Target				
Mean Target Error:				
--				
0.002 m				

Link Name	Setup 1	Setup 2	Overlap	Abs. Mean Error
Link 129	Indoors01-Setup	Indoors01-Setup	91 %	0.002 m
	80	82		
Cloud to Cloud				
Target				
Mean Target Error:				
--				

Link Name	Setup 1	Setup 2	Overlap	Abs. Mean Error
Link 128	Indoors01-Setup	Indoors01-Setup	38 %	0.002 m
	79	80		
Cloud to Cloud				
Target				
Mean Target Error:				
--				

Link Name	Setup 1	Setup 2	Overlap	Abs. Mean Error
Link 127	Indoors01-Setup	Indoors01-Setup	55 %	0.002 m
	78	79		
Cloud to Cloud				
Target				
Mean Target Error:				
--				

Link Name	Setup 1	Setup 2	Overlap	Abs. Mean Error
Link 126	Indoors01-Setup	Indoors01-Setup	31 %	0.002 m
	77	78		
Cloud to Cloud				
Target				
Mean Target Error:				
--				



Link Name	Setup 1	Setup 2	Overlap	Abs. Mean Error
Link 133	Indoors01-Setup	Indoors01-Setup	58 %	0.004 m
	84	85		
	Cloud to Cloud			0.004 m
	Target			Mean Target Error: --

Link Name	Setup 1	Setup 2	Overlap	Abs. Mean Error
Link 132	Indoors01-Setup	Indoors01-Setup	69 %	0.003 m
	82	83		
	Cloud to Cloud			0.003 m
	Target			Mean Target Error: --

Link Name	Setup 1	Setup 2	Overlap	Abs. Mean Error
Link 131	Indoors01-Setup	Indoors01-Setup	66 %	0.004 m
	81	83		
	Cloud to Cloud			0.004 m
	Target			Mean Target Error: --

Link Name	Setup 1	Setup 2	Overlap	Abs. Mean Error
Link 130	Indoors01-Setup	Indoors01-Setup	79 %	0.003 m
	9	10		
	Cloud to Cloud			0.003 m
	Target			Mean Target Error: --



Link Name	Setup 1	Setup 2	Overlap	Abs. Mean Error
Link 134	Indoors01-Setup 84	Indoors01-Setup 86	48 %	0.002 m
Cloud to Cloud				
Target				
Mean Target Error:				
--				

Link Name	Setup 1	Setup 2	Overlap	Abs. Mean Error
Link 135	Indoors01-Setup 86	Indoors01-Setup 87	68 %	0.002 m
Cloud to Cloud				
Target				
Mean Target Error:				
--				

Link Name	Setup 1	Setup 2	Overlap	Abs. Mean Error
Link 136	Indoors01-Setup 87	Indoors01-Setup 88	34 %	0.002 m
Cloud to Cloud				
Target				
Mean Target Error:				
--				

Link Name	Setup 1	Setup 2	Overlap	Abs. Mean Error
Link 137	Indoors01-Setup 88	Indoors01-Setup 89	80 %	0.003 m
Cloud to Cloud				
Target				
Mean Target Error:				
--				

Link Name	Setup 1	Setup 2	Overlap	Abs. Mean Error
Link 141	Indoors01- Setup 92	Indoors01- Setup 93	55 %	0.003 m
Cloud to Cloud				
Target				
Mean Target Error:				
--				

Link Name	Setup 1	Setup 2	Overlap	Abs. Mean Error
Link 140	Indoors01- Setup 91	Indoors01- Setup 92	65 %	0.004 m
Cloud to Cloud				
Target				
Mean Target Error:				
--				

Link Name	Setup 1	Setup 2	Overlap	Abs. Mean Error
Link 139	Indoors01- Setup 90	Indoors01- Setup 91	53 %	0.004 m
Cloud to Cloud				
Target				
Mean Target Error:				
--				

Link Name	Setup 1	Setup 2	Overlap	Abs. Mean Error
Link 138	Indoors01- Setup 89	Indoors01- Setup 90	72 %	0.004 m
Cloud to Cloud				
Target				
Mean Target Error:				
--				



Link Name	Setup 1	Setup 2	Overlap	Abs. Mean Error
Link 142	Indoors01-Setup 93	Indoors01-Setup 94	69 %	0.004 m
Cloud to Cloud				
Target				
Mean Target Error:				
--				

Link Name	Setup 1	Setup 2	Overlap	Abs. Mean Error
Link 143	Indoors01-Setup 94	Indoors01-Setup 95	52 %	0.002 m
Cloud to Cloud				
Target				
Mean Target Error:				
--				

Link Name	Setup 1	Setup 2	Overlap	Abs. Mean Error
Link 144	Indoors01-Setup 95	Indoors01-Setup 96	67 %	0.004 m
Cloud to Cloud				
Target				
Mean Target Error:				
--				

Link Name	Setup 1	Setup 2	Overlap	Abs. Mean Error
Link 145	Indoors01-Setup 96	Indoors01-Setup 97	50 %	0.002 m
Cloud to Cloud				
Target				
Mean Target Error:				
--				



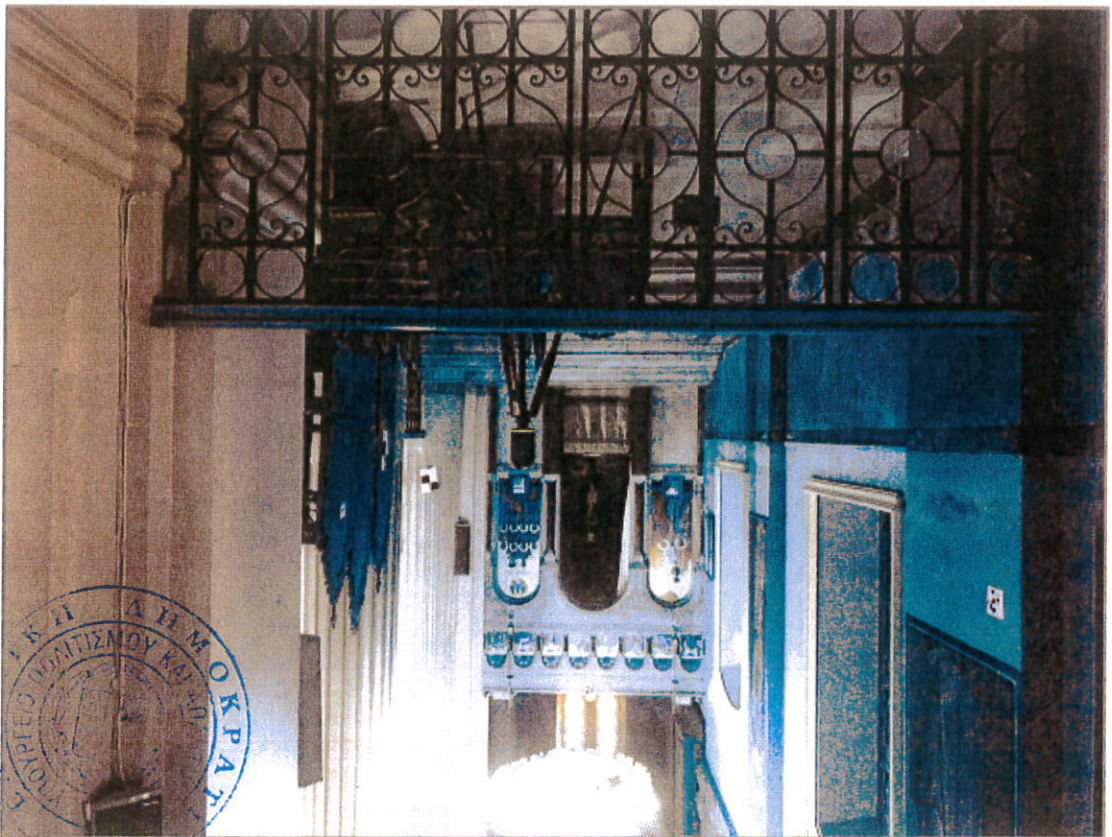
Link Name	Setup 1	Setup 2	Overlap	Abs. Mean Error
Link 149	Indoors01- Setup 102	Indoors01- Setup 58	27 %	0.013 m
Cloud to Cloud				
Target				Mean Target Error: --

Link Name	Setup 1	Setup 2	Overlap	Abs. Mean Error
Link 148	Indoors01- Setup 102	Indoors01- Setup 53	51 %	0.009 m
Cloud to Cloud				
Target				Mean Target Error: --

Link Name	Setup 1	Setup 2	Overlap	Abs. Mean Error
Link 147	Indoors01- Setup 98	Indoors01- Setup 99	60 %	0.002 m
Cloud to Cloud				
Target				Mean Target Error: --

Link Name	Setup 1	Setup 2	Overlap	Abs. Mean Error
Link 146	Indoors01- Setup 97	Indoors01- Setup 98	59 %	0.002 m
Cloud to Cloud				
Target				Mean Target Error: --



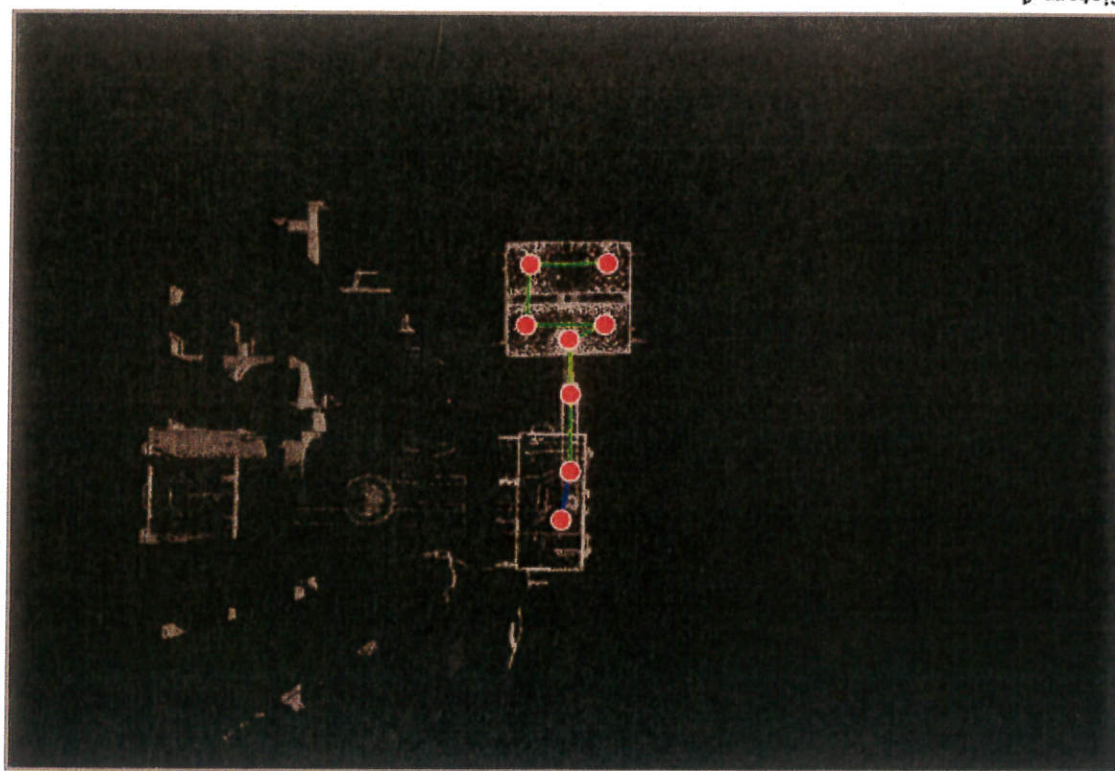


Indoors01-2

Cyclone REGISTER 360 Registration Report



Certified by:



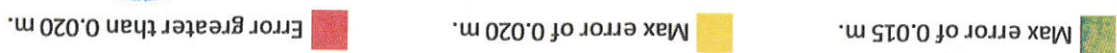
Cistern-1

Overall Quality

Error Results for Bundle 1

Setup Count: 8
Link Count: 7
Strength: 60 %
Overlap: 67 %

Bundle Error 0.001 m ✓	Overlap 67 % ✓	Cloud-to-Cloud 0.001 m ✓
Strength 60 % ✓	Target Error	



Link-Quality Matrix (1 of 1) -



Link Error Results

1 Overview



Link Name	Setup 1	Setup 2	Abs. Mean Error
Link 1	Cistern- Setup 1	Cistern- Setup 2	88 %
Link 2	Cistern- Setup 2	Cistern- Setup 3	55 %
Link 3	Cistern- Setup 3	Cistern- Setup 4	88 %
Link 4	Cistern- Setup 4	Cistern- Setup 5	95 %
Link 5	Cistern- Setup 5	Cistern- Setup 6	49 %
Link 6	Cistern- Setup 6	Cistern- Setup 7	93 %
Link 7	Cistern- Setup 7	Cistern- Setup 8	0 %
Link 8			0.000 m

2 Details

Link Name	Setup 1	Setup 2	Abs. Mean Error
Link 1	Cistern- Setup 1	Cistern- Setup 2	88 %
Link 2	Cistern- Setup 2	Cistern- Setup 3	55 %
Link 3	Cistern- Setup 3	Cistern- Setup 4	88 %
Link 4	Cistern- Setup 4	Cistern- Setup 5	95 %
Link 5	Cistern- Setup 5	Cistern- Setup 6	49 %
Link 6	Cistern- Setup 6	Cistern- Setup 7	93 %
Link 7	Cistern- Setup 7	Cistern- Setup 8	0 %
Link 8			0.000 m

Link Name	Setup 1	Setup 2	Abs. Mean Error
Link 1	Cistern- Setup 1	Cistern- Setup 2	88 %
Link 2	Cistern- Setup 2	Cistern- Setup 3	55 %
Link 3	Cistern- Setup 3	Cistern- Setup 4	88 %
Link 4	Cistern- Setup 4	Cistern- Setup 5	95 %
Link 5	Cistern- Setup 5	Cistern- Setup 6	49 %
Link 6	Cistern- Setup 6	Cistern- Setup 7	93 %
Link 7	Cistern- Setup 7	Cistern- Setup 8	0 %
Link 8			0.000 m

Link Name	Setup 1	Setup 2	Abs. Mean Error
Link 1	Cistern- Setup 1	Cistern- Setup 2	88 %
Link 2	Cistern- Setup 2	Cistern- Setup 3	55 %
Link 3	Cistern- Setup 3	Cistern- Setup 4	88 %
Link 4	Cistern- Setup 4	Cistern- Setup 5	95 %
Link 5	Cistern- Setup 5	Cistern- Setup 6	49 %
Link 6	Cistern- Setup 6	Cistern- Setup 7	93 %
Link 7	Cistern- Setup 7	Cistern- Setup 8	0 %
Link 8			0.000 m

Link Error Results

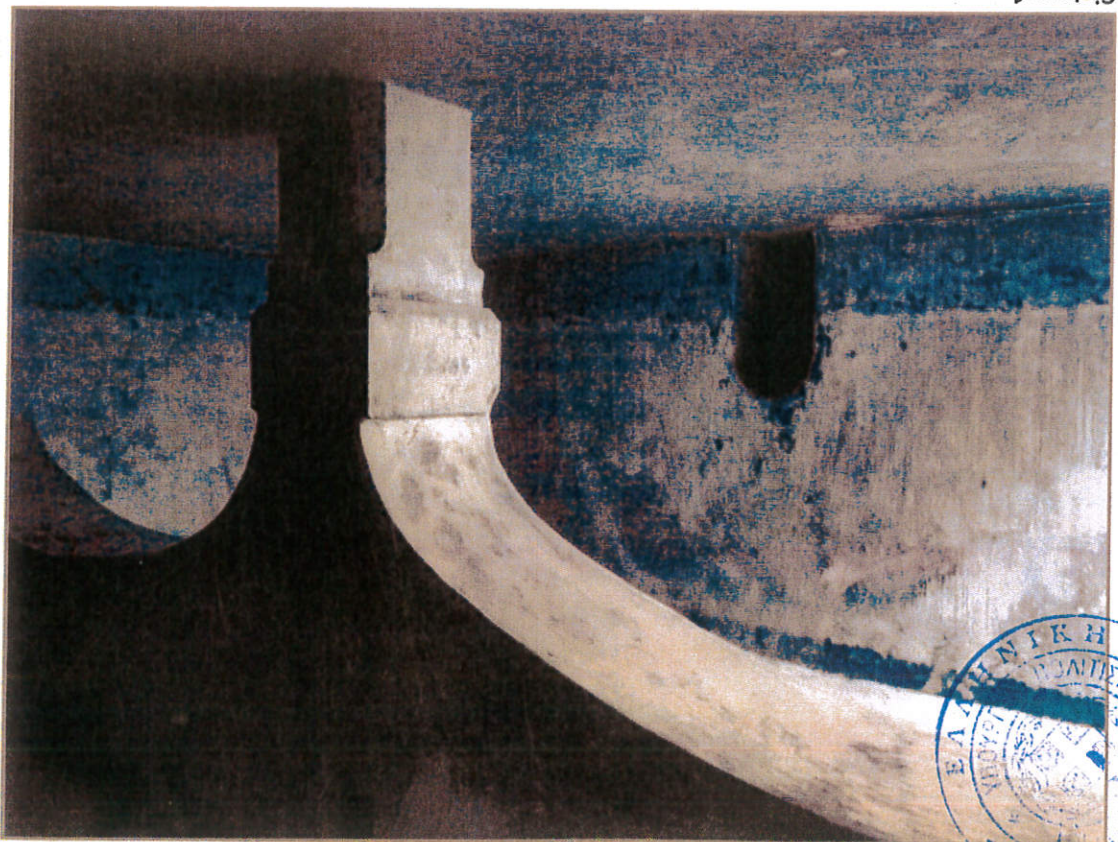
Link Name	Setup 1	Setup 2	Overlap	Abs. Mean Error
Link 4	Cistern- Setup 4	Cistern- Setup 5	95 %	0.001 m
Cloud to Cloud				
Target				
Mean Target Error: 0.001 m				

Link Name	Setup 1	Setup 2	Overlap	Abs. Mean Error
Link 5	Cistern- Setup 5	Cistern- Setup 6	49 %	0.001 m
Cloud to Cloud				
Target				
Mean Target Error: 0.001 m				

Link Name	Setup 1	Setup 2	Overlap	Abs. Mean Error
Link 6	Cistern- Setup 6	Cistern- Setup 7	93 %	0.001 m
Cloud to Cloud				
Target				
Mean Target Error: 0.001 m				

Link Name	Setup 1	Setup 2	Overlap	Abs. Mean Error
Link 7	Cistern- Setup 7	Cistern- Setup 8	0 %	0.000 m
Cloud to Cloud				
Target				
Mean Target Error: 0.000 m				



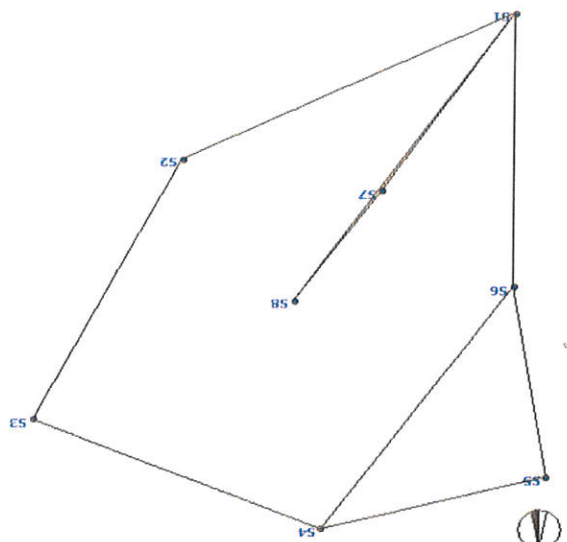


Cistem-1

Graphics



Εργο
Άγιος Μηνάς
Επίλυση
Τριγωνισμός 1
0,9730
Αριθμός Διευθύνσεων
9
Αριθμός Αποστάσεων
87
Γνωστές Συντεταγμένες
3
Άγνωστοι προσανατολισμοί
82
13
Βαθμοί Εξωτερίας
147



Οριζοντιογραφική επίλυση - συντεταγμένες σημείων

Στάση	Αρχικές Συντεταγμένες		Διορθώσεις		Συνορθωμένες		Τυπικά Σφάλμα 00	
	X	Y	ΔX	ΔY	X	Y	X	Y
S1	1000	1000	-	-	1000,000	1000,000	-	-
S2	1038,305	1018,679	-0,001	0,001	1038,304	1018,680	0,001	0,001
S3	1055,298	1051,618	-0,002	-0,008	1055,295	1051,610	0,001	0,002
S4	1021,945	1065,316	0,002	-0,001	1021,947	1065,316	0,001	0,001
S5	996,028	1058,78	-0,002	0,005	996,026	1058,786	0,000	0,001
S6	1000	1034,716	-	0,001	1000,000	1034,718	-	0,001
S7	1015,218	1022,6	-0,002	-0,001	1015,216	1022,599	0,001	0,001
S8	1025,249	1036,543	0,002	-0,002	1025,251	1036,541	0,001	0,001

Οριζοντιογραφική επίλυση - Αρθρώτες Ελαίψεις

Στάση	Συντεταγμένες		Ημιόψεις		Αξιόθvio μεγάλου ημιόψιος (grad)
	X	Y	α	β	
S1	1000,000	1000,000	-	-	-
S2	1038,304	1018,680	0,006	0,004	59,4716
S3	1055,295	1051,610	0,007	0,006	197,0479
S4	1021,947	1065,316	0,006	0,004	13,0296
S5	996,026	1058,786	0,006	0,002	2,4768
S6	1000,000	1034,718	0,005	0,000	0,0000
S7	1015,216	1022,599	0,006	0,002	38,2367
S8	1025,251	1036,541	0,006	0,004	38,6672

Οριζοντιογραφική επίλυση - Σχετικές Ελαίψεις

Αφίερση: 56	X: 1000,000	Y: 1034,718	H: 100,552	Γνωία αφιέρωσης: 0,0000
Σύνολο: 51	X: 1000,000	Y: 1000,000	H: 100,000	Υπόλοιπο Οργάνου: 1,479

Ενότητα	Τριμηνιαίος Ι	00 aposteteriori	Αριθμός Υποστηρικτών διαφορά	Λυσία Υπόθετα	Ανυστα Υπόθετα	Βαθμολογία Υπερθετα
1	0.7489			88	8	7
						81

Αριθμός πρωτόκου ημερίδας	β	α	Στάση	Στάση	Στάση
39.4756	0.002	0.006	S7	S8	S8
38.6672	0.004	0.006	S1	S8	S8
39.4756	0.002	0.006	S8	S7	S7
38.2367	0.002	0.006	S1	S7	S7
199.5827	0.002	0.004	S5	S6	S6
41.5573	0.003	0.005	S4	S6	S6
0.0000	0.000	0.005	S1	S6	S6
199.5827	0.002	0.004	S6	S5	S5
82.7596	0.003	0.004	S4	S5	S5
41.5573	0.003	0.005	S6	S4	S4
82.7596	0.003	0.004	S5	S4	S4
135.3631	0.003	0.006	S3	S4	S4
135.3631	0.003	0.006	S4	S3	S3
28.3324	0.004	0.006	S2	S3	S3
28.3324	0.004	0.006	S3	S2	S2
59.4716	0.004	0.006	S1	S2	S2
-	-	-	S8	S1	S1
-	-	-	S7	S1	S1
-	-	-	S6	S1	S1
-	-	-	S2	S1	S1

Σύστημα: 52	X: 1038,304	Y: 1018,680	H: 100,477	Ψφός Οργάνου: 1,487	Γωλία αφετηρίας: 0,0000
Αφετηρία: 53	X: 1055,295	Y: 1051,610	H: 100,795		

Σημείο	Ψφός οκόντ.	Οπί, Γωλία	Κατακόρ.	Κεκήμειν Γωλία	Ανδοσων	Ψφωερ.	Οπίδντ.	X	Y	H	Κωδικός
F19	0.000	25.6004	97.7928	11.818	1.793	11.811	1046.203	1044.071	102.588	0	
F20	0.000	48.7282	100.0926	11.968	1.366	11.968	1043.969	1047.743	102.161	0	
F21	0.000	59.2220	100.8432	13.293	1.207	13.292	1042.182	1049.437	102.002	0	
F22	0.000	72.7660	100.2040	15.160	1.334	15.160	1040.153	1052.346	102.129	0	
	0.000	68.2118	97.9234	15.085	1.875	15.077	1040.222	1051.264	102.670	0	
	0.000	63.1938	91.6354	14.983	3.346	14.854	1040.518	1050.100	104.141	0	
20	0.000	35.0780	96.6858	12.991	2.059	12.973	1044.191	1044.902	102.854	0	
18	0.000	55.5914	55.0928	21.060	15.037	16.034	1039.652	1048.092	115.832	0	
	0.000	81.0908	99.3458	16.837	1.556	16.836	1038.729	1054.613	102.351	0	
F23	0.000	82.0092	92.2386	17.548	3.517	17.417	1038.203	1054.964	104.312	0	
N	0.000	85.1568	98.2876	19.096	1.897	19.089	1036.768	1056.207	102.692	0	

Σύστημα: 52	X: 1038,304	Y: 1018,680	H: 100,477	Ψφός Οργάνου: 1,383	Γωλία αφετηρίας: 399,9998
Αφετηρία: 53	X: 1055,295	Y: 1051,610	H: 100,795		

Σημείο	Ψφός οκόντ.	Οπί, Γωλία	Κατακόρ.	Κεκήμειν Γωλία	Ανδοσων	Ψφωερ.	Οπίδντ.	X	Y	H	Κωδικός
K1	1.300	117.0530	99.5336	20.576	0.360	20.576	1009.367	1049.034	100.723	0	
K2	1.300	347.0174	102.8652	2.856	0.081	2.853	1024.526	1066.537	100.444	0	
F33	0.000	95.2968	99.1408	17.762	1.749	17.761	1016.426	1048.435	102.112	0	
F25	0.000	15.5254	98.5604	16.124	1.874	16.119	1034.935	1055.769	102.237	0	
F27	0.000	103.7440	11.358	0.841	11.339	1030.399	1057.758	101.204	102.027	0	
F29	0.000	47.4214	98.6140	7.142	1.664	7.141	1024.962	1058.843	104.118	0	
	0.000	48.4992	80.0090	7.272	3.755	6.917	1024.761	1058.998	104.245	0	
	0.000	28.0592	85.8392	10.755	3.882	10.490	1029.021	1057.770	104.316	0	

Σύστημα: 54	X: 1021,947	Y: 1065,316	H: 100,363	Ψφός Οργάνου: 1,509	Γωλία αφετηρίας: 399,9994
Αφετηρία: 53	X: 1055,295	Y: 1051,610	H: 100,795		

Σημείο	Ψφός οκόντ.	Οπί, Γωλία	Κατακόρ.	Κεκήμειν Γωλία	Ανδοσων	Ψφωερ.	Οπίδντ.	X	Y	H	Κωδικός
D	0.000	25.8302	66.7914	29.785	16.349	25.824	1021.525	1054.698	113.778	0	
F30	0.000	19.1222	88.0916	28.527	6.812	28.029	1024.015	1057.285	104.241	0	
F31	0.000	25.6566	90.6696	26.217	5.254	25.948	1021.658	1054.749	102.683	0	
	0.000	20.3992	92.7030	27.727	4.678	27.545	1023.497	1056.759	102.107	0	
	0.000	26.4510	89.8318	26.128	5.662	25.795	1021.455	1054.455	103.091	0	
30	0.000	25.6566	90.6696	26.217	5.254	25.948	1021.658	1054.749	102.683	0	
31	0.000	26.4510	89.8318	26.128	5.662	25.795	1021.455	1054.455	103.091	0	
32	0.000	35.3020	86.3330	24.973	6.827	24.400	1019.280	1051.395	104.256	0	
33	0.000	55.9412	86.3666	22.706	6.333	22.188	1013.929	1045.680	103.762	0	
F36	0.000	62.5172	89.8702	22.627	5.092	22.341	1012.596	1043.800	102.521	0	
F35	0.000	70.9754	91.2212	23.145	4.689	22.925	1010.842	1041.292	102.118	0	
E	0.000	58.8048	91.3888	22.840	4.594	22.630	1013.666	1044.611	102.023	0	

Σύστημα: 55	X: 996,026	Y: 1058,786	H: 97,429	Ψφός Οργάνου: 1,507	Γωλία αφετηρίας: 0,0000
Αφετηρία: 54	X: 1021,947	Y: 1065,316	H: 100,363		

Σημείο	Ψφός οκόντ.	Οπί, Γωλία	Κατακόρ.	Κεκήμειν Γωλία	Ανδοσων	Ψφωερ.	Οπίδντ.	X	Y	H	Κωδικός
A	0.000	92.4736	68.7008	31.622	16.433	27.876	1005.977	1032.746	113.862	0	
B	0.000	74.0030	65.0150	28.544	16.414	24.341	1010.857	1039.484	113.843	0	
C	0.000	45.0656	64.1640	27.690	16.282	23.418	1016.998	1048.367	113.711	0	

Σύστημα: 55	X: 996,026	Y: 1058,786	H: 97,429	Ψφός Οργάνου: 1,505	Γωλία αφετηρίας: 0,0000
Αφετηρία: 54	X: 1021,947	Y: 1065,316	H: 100,363		

Σημείο	Ψφός οκόντ.	Οπί, Γωλία	Κατακόρ.	Κεκήμειν Γωλία	Ανδοσων	Ψφωερ.	Οπίδντ.	X	Y	H	Κωδικός
F37	0.000	77.4180	98.7558	11.871	1.758	11.868	1010.309	1010.310	104.318	0	
F38	0.000	95.3274	99.5494	9.109	1.590	9.108	1008.854	1007.142	104.318	0	
	0.000	90.3560	86.4104	10.598	3.766	10.358	1009.848	1007.256	104.318	0	



Σημείο	Υψος οκόν.	Ορίκ. Γωλία	Κατακόρ. Γωλία	Κεκλιμένη Ανάσπαση	Υψόμετρ. Διαφορά	Ορίκων. Ανόστ.	X	Y	H	Κωδικός
F63										
87	0.000	171.6776	100.7020	9.945	1.457	9.945	1027.021	1046.327	102.566	0
	0.000	170.2788	92.6102	9.801	2.702	9.735	1026.773	1046.157	103.811	0
F66										
86	0.000	175.9320	97.8316	13.342	2.021	13.342	1028.496	1049.474	103.130	0
144	0.000	192.5036	94.2286	13.043	2.748	12.990	1031.548	1047.902	103.857	0
85	0.000	203.0150	96.5028	21.556	2.751	21.523	1038.637	1053.395	103.860	0
91	0.000	204.9596	94.1624	13.046	2.762	12.992	1033.638	1046.463	103.871	0
	0.000	221.8212	94.7442	13.403	2.672	13.358	1036.244	1044.129	103.781	0
F61										
84	0.000	227.7552	95.1942	10.079	2.327	10.051	1034.018	1041.456	103.436	0
67	0.000	229.2310	100.4812	9.817	1.493	9.816	1033.923	1041.141	102.602	0
	0.000	270.0612	97.7150	9.151	1.895	9.145	1034.288	1035.142	103.004	0
F46										
	0.000	289.0488	97.3418	8.456	1.920	8.449	1032.852	1032.852	103.029	0
F47										
	0.000	313.0502	97.4860	8.541	1.904	8.535	1031.018	1030.250	103.013	0
F53										
63	0.000	300.8534	101.5406	13.791	1.233	13.787	1036.332	1028.338	102.342	0
62	0.000	310.5666	97.1984	9.355	1.979	9.346	1031.830	1029.903	103.088	0
61	0.000	289.4274	101.4066	8.437	1.381	8.435	1032.817	1032.813	102.490	0
64	0.000	286.1030	98.5736	14.379	1.889	14.375	1038.460	1030.869	102.998	0
66	0.000	299.2026	101.3944	13.795	1.265	13.792	1036.545	1028.625	102.374	0
65	0.000	316.3806	97.8374	14.316	2.053	14.308	1034.354	1025.503	103.162	0
	0.000	327.2310	101.9158	10.218	1.260	10.214	1030.319	1027.673	102.369	0
F80										
68	0.000	342.2062	94.9432	6.188	2.058	6.168	1026.979	1030.620	103.167	0
	0.000	345.7894	94.4836	5.835	2.072	5.814	1026.563	1030.878	103.181	0
Σημείο	Υψος οκόν.	Ορίκ. Γωλία	Κατακόρ. Γωλία	Κεκλιμένη Ανάσπαση	Υψόμετρ. Διαφορά	Ορίκων. Ανόστ.	X	Y	H	Κωδικός

Στάση: 58	X: 1025.251	Y: 1022.599	H: 101.109	Υψος Ορύκων: 1.567	Γωλία αφετηρίας: 0.0002
Αφετηρία: 57	X: 1015.216	Y: 1022.599	H: 101.140	Υψος Ορύκων: 1.539	Γωλία αφετηρίας: 0.0000

F55										
127	0.000	373.4576	133.0220	1.966	0.564	1.707	1014.918	1020.918	101.704	0
	0.000	45.3594	89.6596	2.084	1.876	2.057	1013.231	1022.059	103.016	0
F57										
129	0.000	99.5384	99.1740	12.382	1.700	12.381	1004.896	1029.439	102.840	0
128	0.000	115.2944	102.0144	12.692	1.137	12.686	1006.681	1031.985	102.277	0
135	0.000	136.0344	103.0570	5.126	1.293	5.120	1013.165	1027.291	102.433	0
	0.000	168.4024	117.0884	2.712	0.820	2.615	1015.467	1025.202	101.960	0
F54										
137	0.000	302.2212	99.0020	12.953	1.742	12.951	1025.700	1014.995	102.882	0
136	0.000	297.1748	102.4890	13.467	1.013	13.456	1026.700	1015.586	102.153	0
132	0.000	284.1116	97.6422	12.424	1.999	12.415	1026.895	1018.387	103.139	0
Σημείο	Υψος οκόν.	Ορίκ. Γωλία	Κατακόρ. Γωλία	Κεκλιμένη Ανάσπαση	Υψόμετρ. Διαφορά	Ορίκων. Ανόστ.	X	Y	H	Κωδικός

Στάση: 57	X: 1015.216	Y: 1022.599	H: 101.140	Υψος Ορύκων: 1.539	Γωλία αφετηρίας: 0.0000
Αφετηρία: 51	X: 1000.000	Y: 1000.000	H: 100.000	Υψος Ορύκων: 1.539	Γωλία αφετηρίας: 0.0000

F5										
130	0.000	274.0222	94.1910	6.579	2.138	6.551	1021.656	1021.397	103.278	0
	0.000	243.1176	89.3202	3.032	2.045	2.990	1018.071	1023.485	103.185	0
F4										
	0.000	169.4604	89.7142	2.702	1.974	2.667	1015.516	1025.249	103.114	0
Σημείο	Υψος οκόν.	Ορίκ. Γωλία	Κατακόρ. Γωλία	Κεκλιμένη Ανάσπαση	Υψόμετρ. Διαφορά	Ορίκων. Ανόστ.	X	Y	H	Κωδικός

Στάση: 57	X: 1015.216	Y: 1022.599	H: 101.140	Υψος Ορύκων: 1.539	Γωλία αφετηρίας: 0.0000
Αφετηρία: 51	X: 1000.000	Y: 1000.000	H: 100.000	Υψος Ορύκων: 1.539	Γωλία αφετηρίας: 0.0000

F17										
14	0.000	380.6016	94.2010	17.187	3.050	17.116	1041.227	1035.545	103.527	0
13	0.000	377.8880	97.3102	13.352	2.051	13.340	1040.020	1031.909	102.528	0
10	0.000	344.3622	99.7950	7.591	1.511	7.591	1025.679	1031.988	101.988	0
9	0.000	292.0320	93.1378	7.623	2.307	7.579	1031.188	1021.287	102.784	0
8	0.000	264.4452	97.1086	9.533	1.920	9.523	1028.813	1017.899	102.397	0
7	0.000	248.1828	93.8574	12.642	2.705	12.583	1026.431	1014.512	103.182	0
	0.000	381.7542	98.8132	17.769	1.818	17.766	1041.655	1036.127	102.295	0
	0.000	374.4310	97.4758	12.102	1.967	12.092	1039.207	1030.738	102.444	0
	0.000	353.7670	96.9398	8.169	1.880	8.159	1036.286	1026.586	102.357	0
	0.000	299.0406	105.0358	7.668	0.889	7.545	1031.548	1022.038	101.366	0
	0.000	275.2114	104.1214	8.640	0.928	8.622	1029.715	1019.429	101.405	0
	0.000	259.8606	94.0452	10.186	2.438	10.142	1028.282	1017.123	102.915	0
	0.000	246.9574	96.3216	12.930	2.234	12.909	1026.209	1014.171	102.711	0
Σημείο	Υψος οκόν.	Ορίκ. Γωλία	Κατακόρ. Γωλία	Κεκλιμένη Ανάσπαση	Υψόμετρ. Διαφορά	Ορίκων. Ανόστ.	X	Y	H	Κωδικός



[illegible]

